



WELCOME!

A Public Meeting on Chemung County's Comprehensive Plan



Elmira 1878



Big Flats Union School Hickory Street 1900



Chemung Landscape



Chemung River



Elmira North Main Street Cultural Connector



Horsehead Hanover Square Historic District

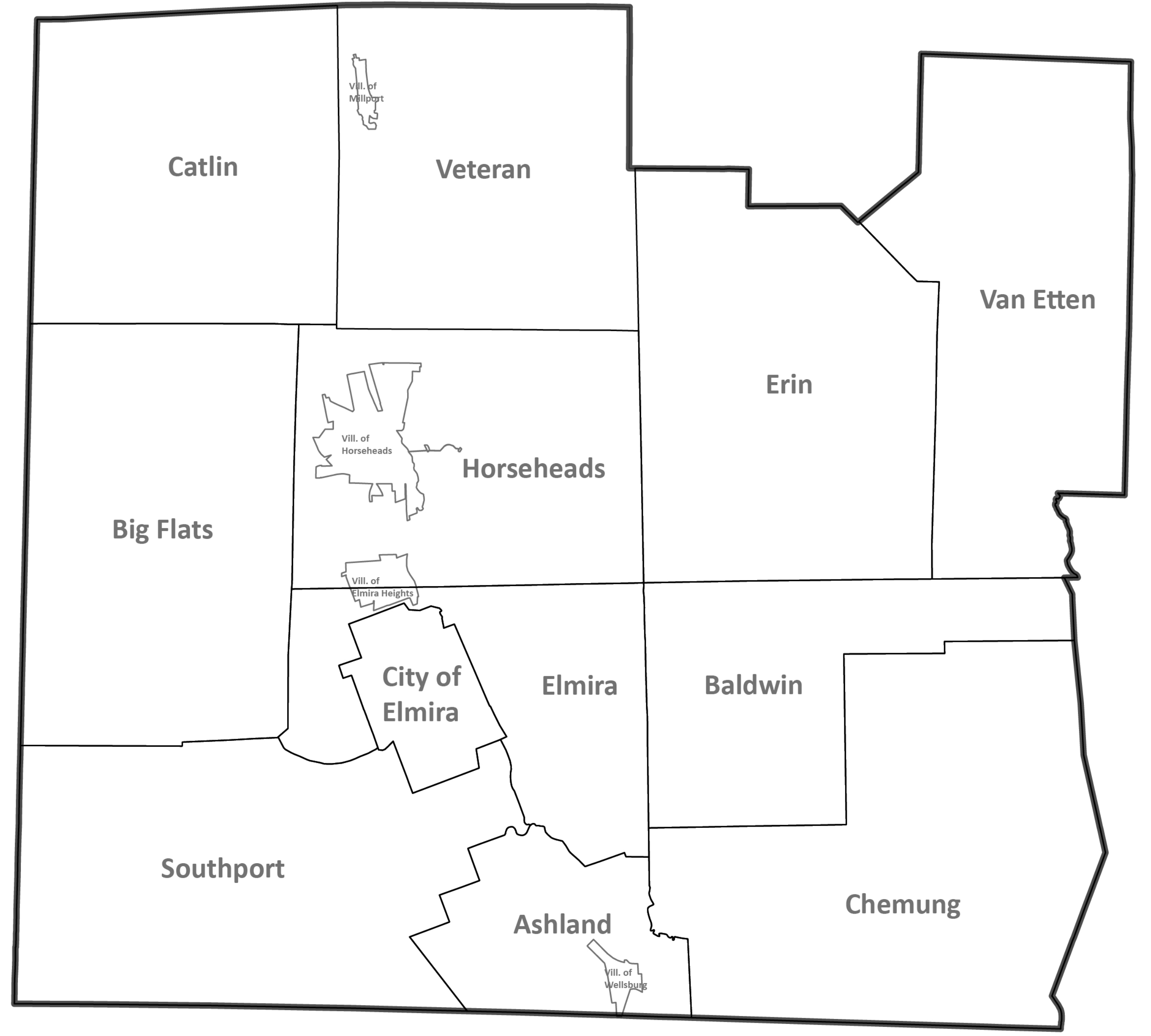
Key Visioning Questions

What do you love about Chemung County?

What are the challenges currently facing the County?

What opportunities do you see for the County?

What are your top five priorities for the County?





About the Plan

- Chemung County's First Comprehensive Plan.
- Develop a communications brand and identity and educational materials to support the planning initiative.
- Catalogue existing environmental, historical, agricultural, demographic and socio-economic trends in the County.
- Develop a vision, short, and long-term goals for the future of the County.
- Develop implementation strategies and recommendations including identification of projects, programs, and initiatives to facilitate various goals.

The Purpose of a Comprehensive Plan

- Develop a unified vision for the growth, development, protection, and future of the County.
- Create a roadmap for a variety of infrastructural, economic, and community-oriented projects.
- Support communities and municipalities in pursuing grant funding opportunities.
- Guide future land use decisions and development with the needs and desires of the community at the forefront.
- Provide a framework for future budget decisions / allocation of funding towards priority projects and initiatives.

Comprehensive Plan Scope of Work

The scope of the work for the Chemung County Comprehensive Plan includes the following tasks:

- Review of Existing Planning Documents and Kick-off Meeting
- Develop Educational Materials Task
- Public Outreach/Engagement
- Inventory & Analysis
- Implementation Strategies and Recommendations
- Draft Comprehensive Plan
- Final Plan, Prepare State Environmental Quality Review Act (SEQR) & Adoption

Implementation Strategies and Recommendations

- Utilize the information and findings from public engagement, inventory, and analysis.
- Develop an implementation strategy that identifies short-, medium-, and long-term projects, programs, and initiatives to align with the goals and objectives of the Comprehensive Plan. Include time frames for implementation.
- Prepare an implementation matrix to identify the recommend key projects, programs, and initiatives, potential grant funding sources, and responsible parties.



Project Logo



Chemung County Partners



Consultant Team

AGRICULTURAL AND FARMLAND PROTECTION PLAN

About the Plan

- Existing “Agricultural Economic Development Plan” adopted in 2011.
- Data gathering and analysis to document local conditions, production, current and potential markets.
- Identify potential farmland based on soil classification, inclusion in New York State Agricultural Districts, land receiving Agricultural Assessments, and underutilized but viable farmlands.
- Create a series of implementation strategies and recommendations for supporting the County’s agricultural industry over the next ten years.
- Analyze existing regulatory frameworks and regulations that govern the agricultural economy in the county.



Tractor In Vineyard Grape Trees

Agricultural Planning Milestones in Chemung County

- 1971: Implementation of Article 25AA of the Agriculture and Markets Law in New York State, which authorized preservation and protection of agricultural lands and products.
- 2011: Adoption of the “Chemung County Agricultural Economic Development Plan”.
- 2017: Chemung County Legislature votes to consolidate Chemung County’s five agricultural districts into one Consolidated District.
- 2018: Publication of the “Chemung County Report for the Consolidation of Agricultural Districts (1-5)”.
- 2023: Begin development for the Agricultural and Farmland Protection Plan.



Chemung County Landscape

Goals of the Agricultural and Farmland Protection Plan

- Examine the existing state of Chemung County’s agricultural economy.
- Identify farmland that should be protected.
- Identify strategies to invigorate the County’s agricultural economy.
- Analyze planning and land use programs for Farmland Protection Plan consistency.



LONG RANGE TRANSPORTATION PLAN

About the Plan

- An Existing Plan: 2040 Long Range Transportation Plan adopted in 2019.
- Analyze the existing transportation system and infrastructural / natural / cultural systems that influence the system.
- Create a series of strategies for transportation investments over the next twenty years.
- Create a financial plan with projects over a twenty-year period.
- Identify implementation strategies and recommendations for short-, medium- and long-term projects, programs and initiatives.

Elmira-Chemung Transportation Council (ECTC) Current Planning Efforts

- 2019: Long Range Transportation Plan.
- 2022: Transportation Improvement Program (2022/23 - 2026/27).
- 2022: Elmira-Chemung Transportation Council Regional ITS Architecture.
- 2022: Chemung County Coordinated Transportation Plan.
- 2023: Unified Planning Work Program 2023-2024.

2040 Long Range Transportation Plan (adopted in 2019)

- ECTC is required to update the Long-Range Transportation Plan no less often than every five years.
- Recommended Future Transportation Strategies in the Near-Term (next five years), Mid-Term (next 6-10 years), and Long-Term (>10 years).
- 2040 LRTP included 37 Near-Term, 20 Mid-Term, and 18 Long-Term Future Transportation Strategies (some Strategies were classified in multiple categories).
- Included recommendations for “New Mobility” incorporated technology in transportation network, including for curbside management, parking management, connected corridors, mobility as a service, and inclusive and universal design.
- Examined impact of transportation system on the manufacturing, food, and agricultural industries and on bolstering entrepreneurship.



Elmira North Main Street Cultural Connector

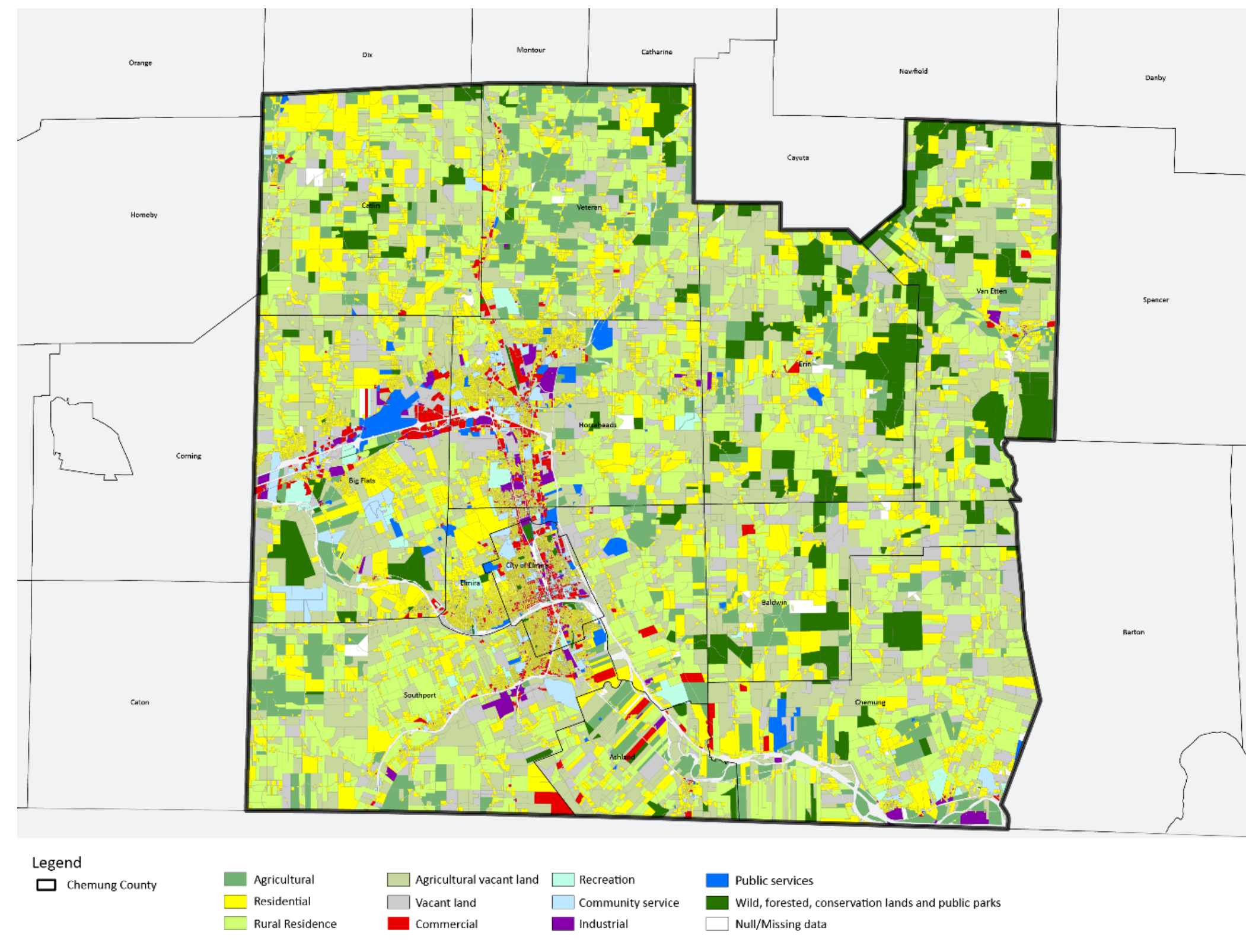
Safety	To achieve a significant reduction in traffic fatalities and serious injuries on all public roads.
Infrastructure Condition	To maintain the highway infrastructure asset system in a state of good repair.
Congestion Reduction	To achieve a significant reduction in congestion on the National Highway System.
System Reliability	To improve the efficiency of the surface transportation system.
Freight Movement & Economic Vitality	To improve the national freight network, strengthen the ability of rural communities to access national and international trade markets, and support regional economic development.
Environmental Sustainability	To enhance the performance of the transportation system while protecting and enhancing the natural environment.
Reduced Project Delivery Delays	To reduce project costs, promote jobs and the economy, and expedite the movement of people and goods by accelerating project completion through eliminating delays in the project development and delivery process, including reducing regulatory burdens and improving agencies' work practice.

Federal Priorities Identified in the "2040 Long Range Transportation Plan" adopted in 2019.





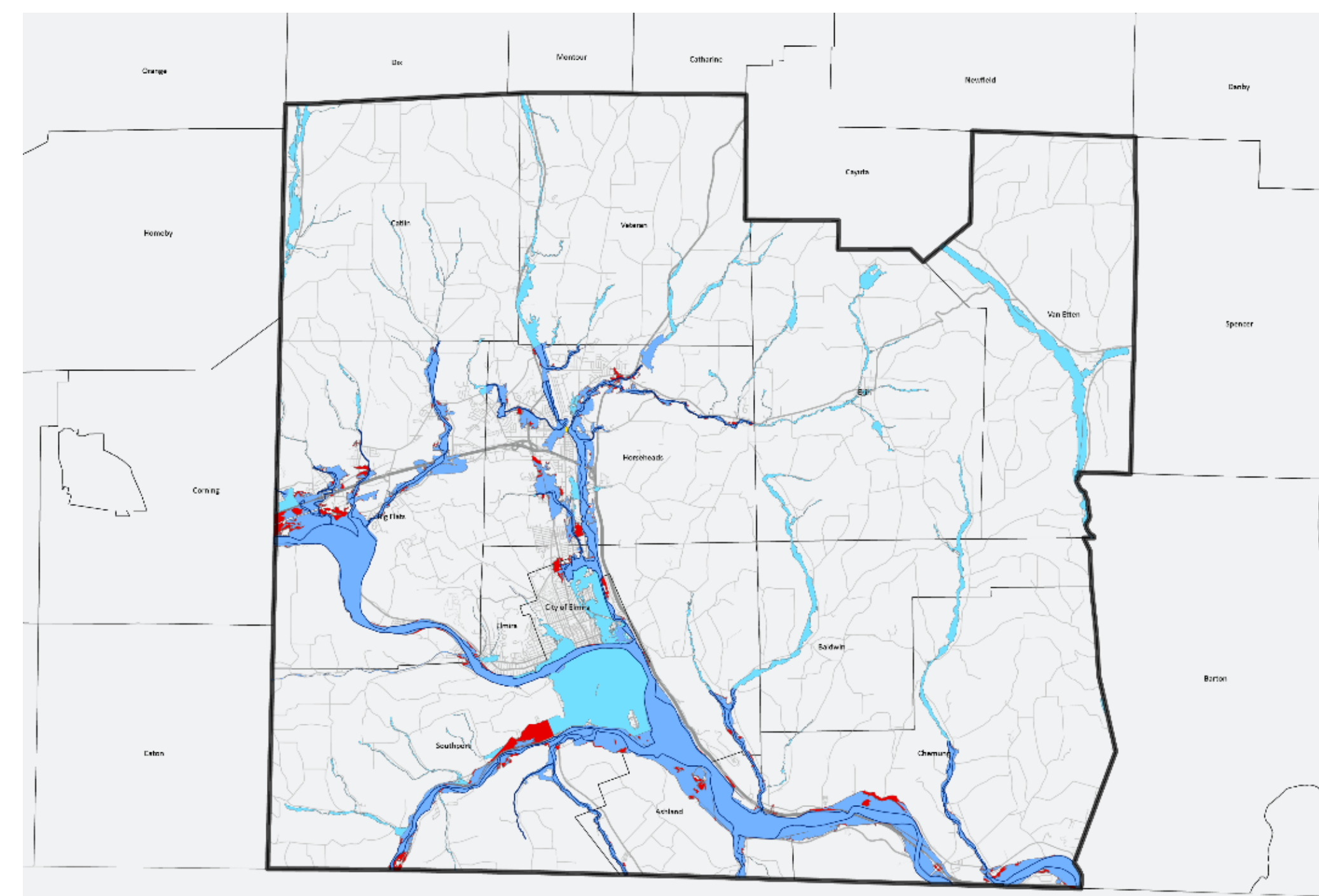
Key Findings from the Inventory Process



Land Use

Land Use

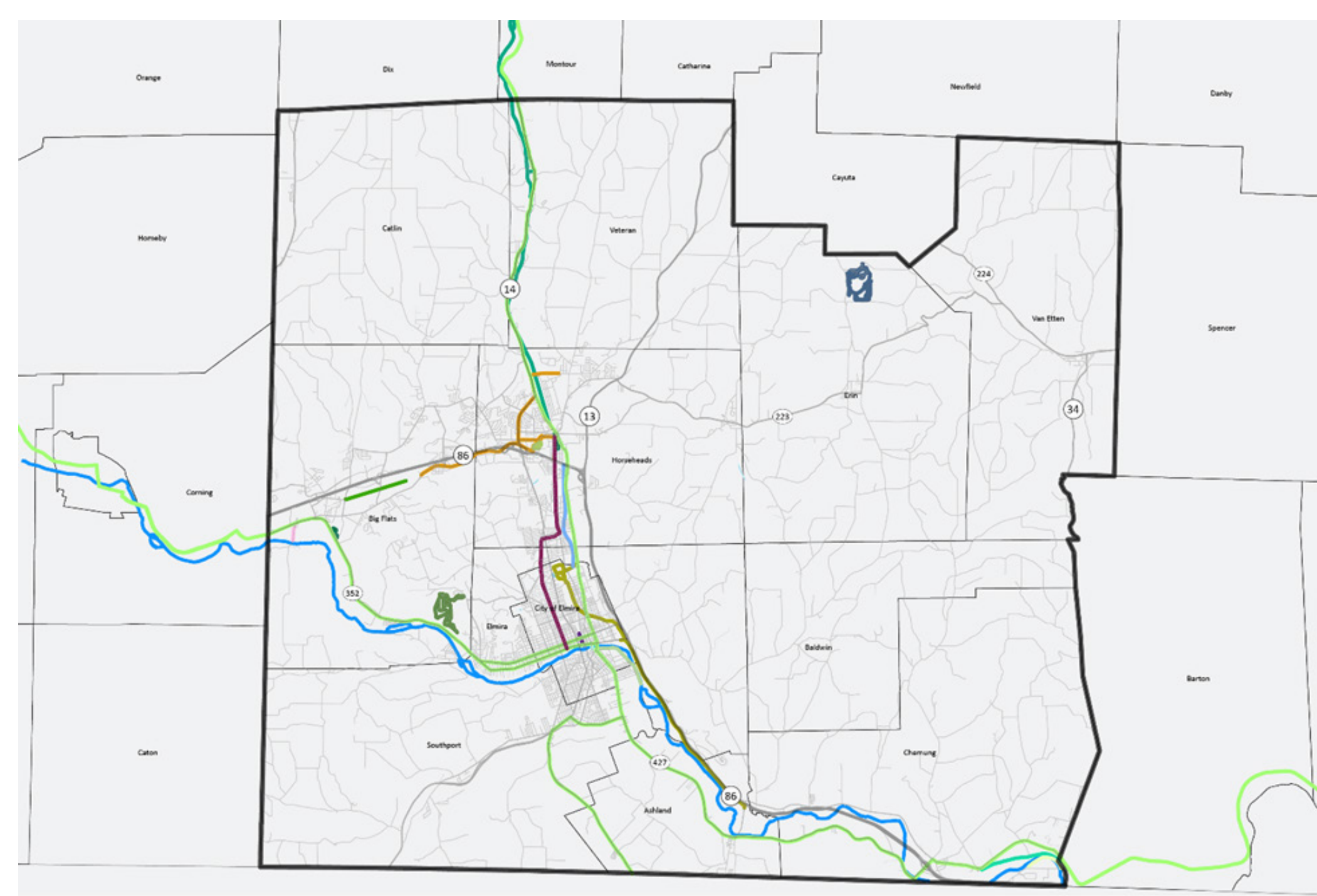
- Land Use:
 - Predominantly **agricultural**
 - Highest densities in City of Elmira and Horseheads
- Zoning:
 - Zoning regulations are **set individually by municipalities** and therefore are not the same County-wide
 - Most municipalities' zoning districts **encourage agriculture** and have relatively simple zoning
 - City of Elmira is an exception, with 16 zoning districts



Floodplains in Chemung County

Natural/Scenic Resources

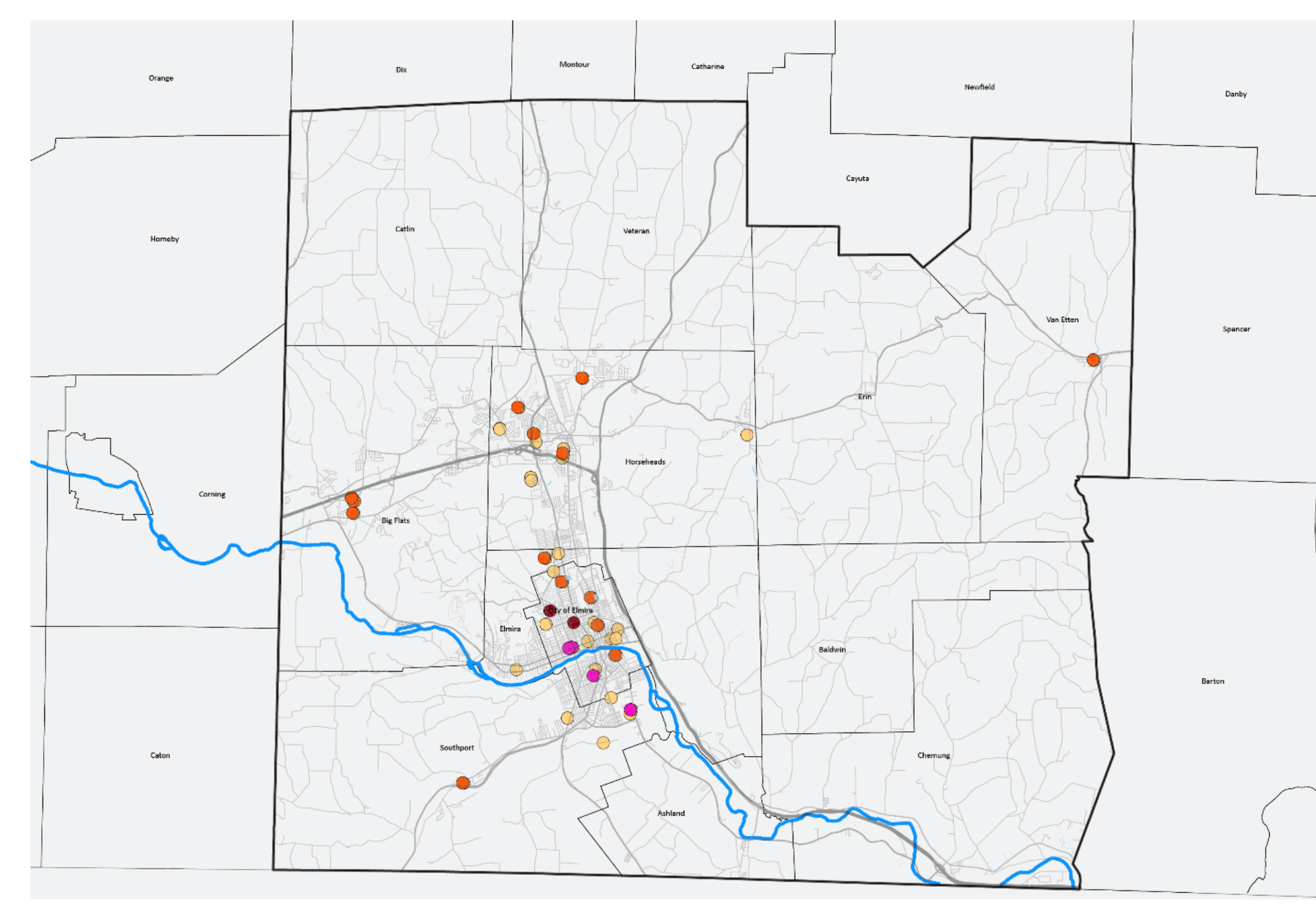
- **64%** of soils are Prime Farmland, Farmland of Statewide Importance or Prime Farmland if Drained
- **3** major watersheds
- **7** major rivers/streams
- **5,460** acres of NWI mapped wetland
- Large floodplain around Chemung River, history of **major flooding**
- **5** NYSDEC Significant Natural Communities



Trails in Chemung County

Parks and Open Space

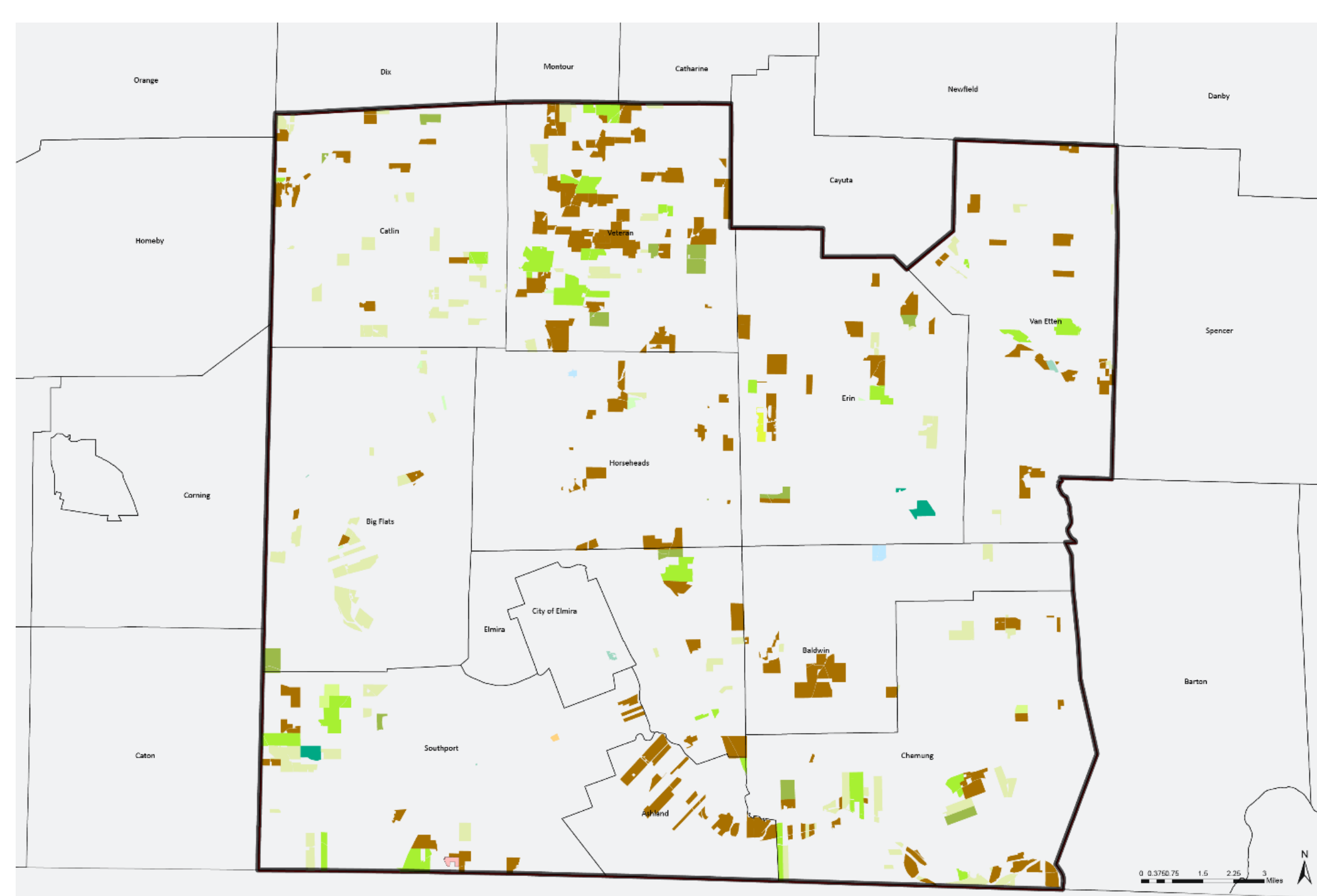
- **80** recreation areas
- **3** County parks
- Various **trails and state parks** throughout the County
- **Rinks, sports fields, and athletic centers** throughout County
- **Boat launches** and kayaking along Chemung River
- Mapping shows a gap in dedicated parkland and recreation space in eastern portion of County, north of Chemung River



K-12 and Higher Education Institutions in Chemung County

Education and Community Facilities

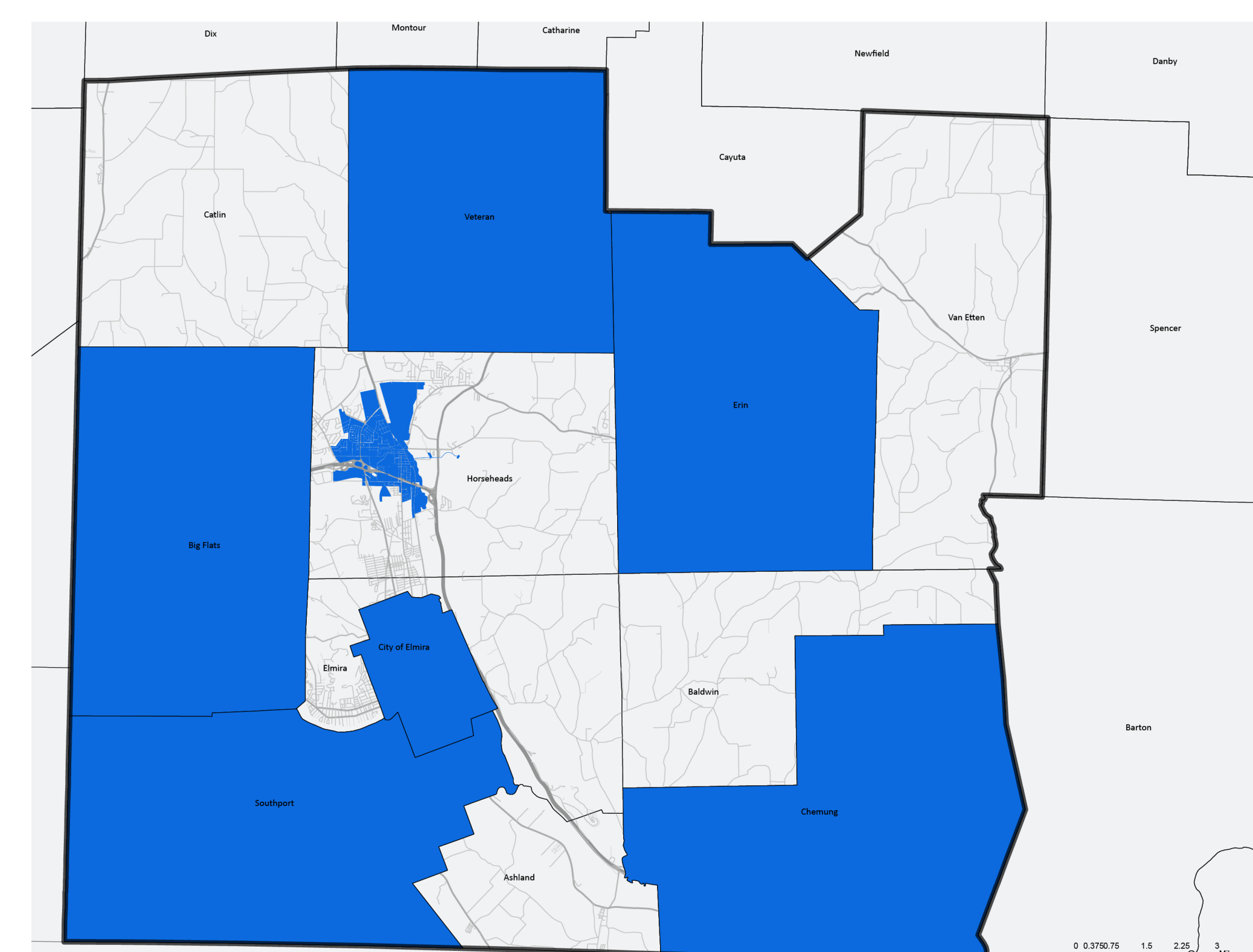
- **42** Chemung County Municipal Departments
- **39** K-12, Kindergarten, and schools for at-risk youth; **9** school districts, served ~10,000 in 2023; enrollment has **dropped by ~1,000** since 2012
- **3** Higher Education Institutions
- **5** municipalities served by County Library District
- **11** Fire Departments
- Chemung County Fairgrounds, Horseheads



Agricultural Land Use

Agriculture

- **352** Farms, mostly mid-sized farms, which has **decreased in number of farms (2002-2022)**; total acreage of farmland has also decreased (2002-2022)
- **Town of Veteran** has the most agricultural parcels (98)
- **One** Agricultural District (consolidated in 2018)
- **\$34,453,000** total farm sales (2022), has almost tripled since 2002
- Highest crop cover is **forage** (hay, haylage, grass silage, green chop) then **corn**
- Lower **market value per acre** than Schuyler and Tompkins counties; higher than Tioga county



Municipalities in Chemung County with completed comprehensive plans

Municipal Comprehensive Plans

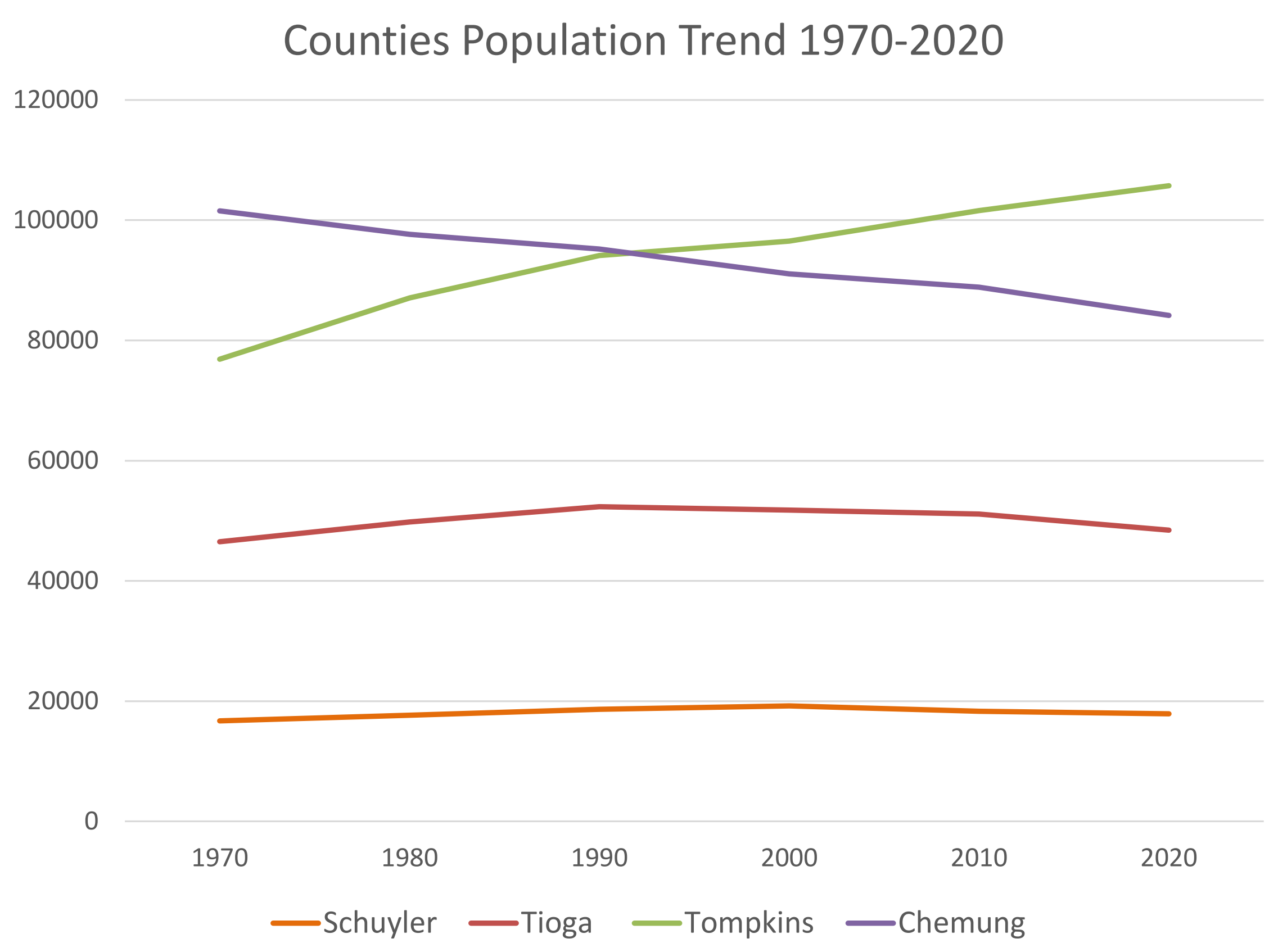
Common Themes:

Economic Development	Smart Growth Principles	Housing Needs
Environmental Resiliency	Multimodal Transportation	Transportation Infrastructure
Open Space and Recreation	Administrative and Government Functions	Improved Well Being



CHEMUNG COUNTY COMPREHENSIVE PLAN

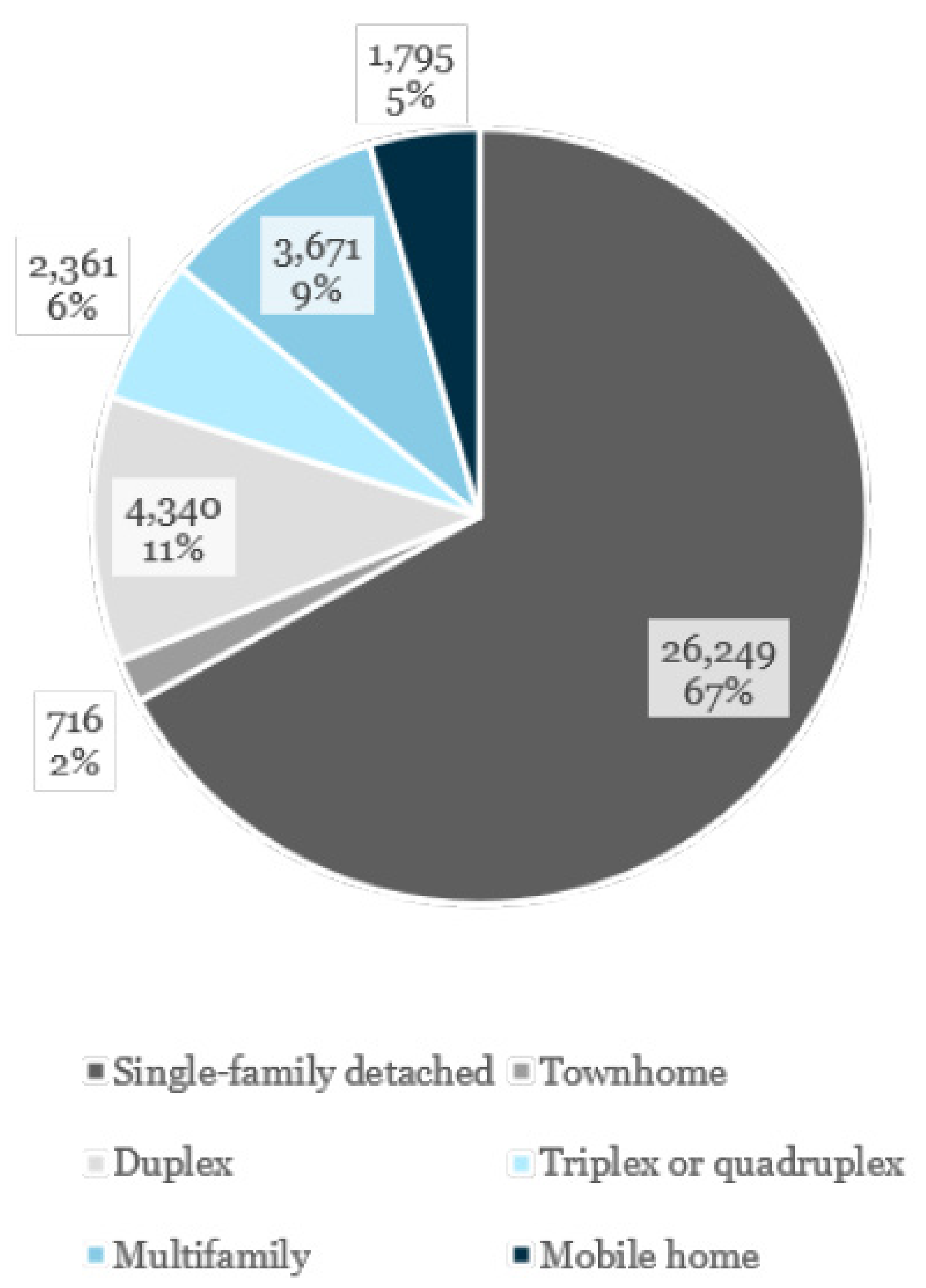
Key Findings from the Inventory Process



Demographics

- Trending **downward**:
 - Total Population
 - Unemployment rate
- Trending **upward**:
 - % older residents
 - % residents identifying as diverse race/ethnicity
- Other trends:
 - City of Elmira has **greatest diversity in County**
 - Lower** rates of higher education than NYS average
 - Lower** Median Household Income than NYS median

Population Trends in Chemung County and Surrounding Counties

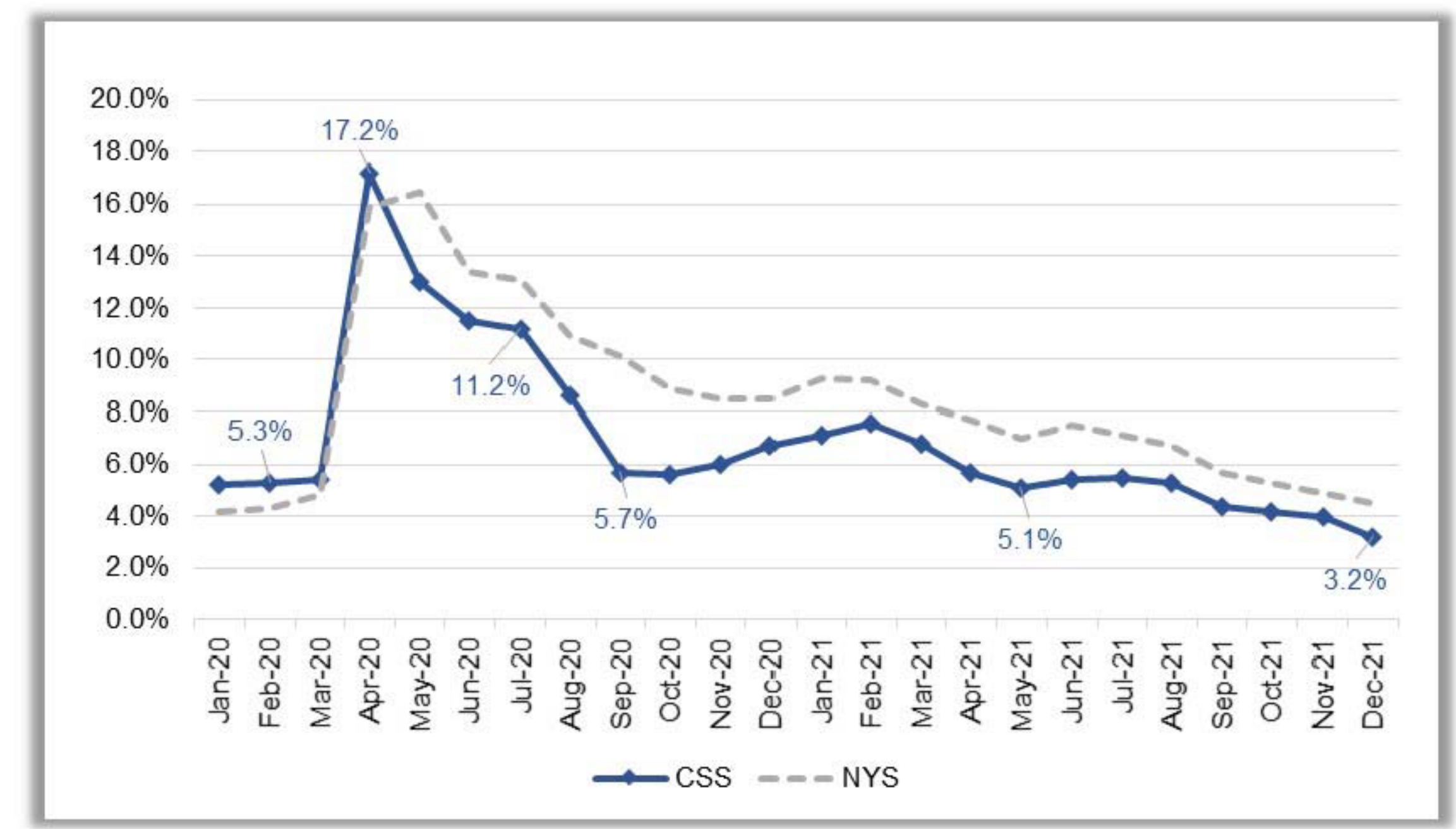


Housing

- Excess vacancy rate and pent-up housing demand
- Most single-family homes are too large for current household sizes
- Single-Family Detached** are most common homes in County
- High demand for **multifamily homes for rent**
- More affordable housing options** than surrounding Counties, but many residents are still **cost-burdened**

Housing Stock Breakdown

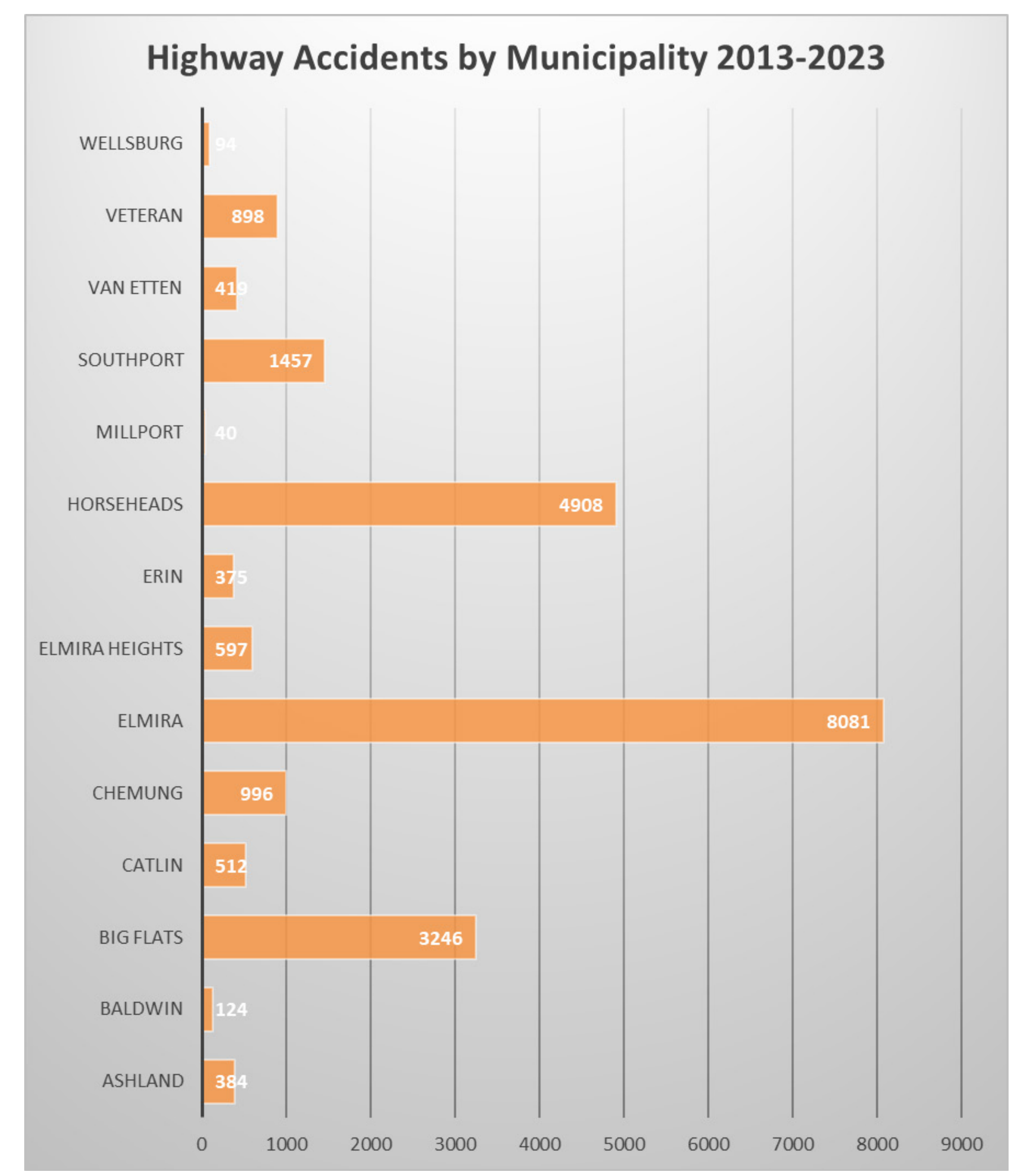
Figure 5: Monthly Unemployment Rates, 2020-21, Chemung-Schuyler-Steuben and NYS
Source: NYS Department of Labor, Local Area Unemployment Statistics



Unemployment Rates in Chemung, Schuyler, and Steuben Counties & New York State

Economy

- Workforce Development** crucial consideration for all regional partners and major employers
- Major Industries: **Health Care, Manufacturing, Retail Trade**
- The **agricultural industry** is critical to the County's identity and land use
- Unemployment** grew in 2020, but dropped below NYS average in 2021
- REDC Southern Tier 2023 Strategic Plan indicates a **4% drop in tourism** to Chemung County



Highway Accidents by Municipality in Chemung County, 2013-2023

Mobility

- ECTC, C-TRAN, Chemung County Coordinated Transportation Committee
- 40%** roads are "Local Rural" per NYSDOT and FHWA
- >22,000** collisions in County, 2013-2023, predominantly in City of Elmira
- +250** bridges, 82% of bridges were scored as "fair" by NYSDOT
- C-TRAN service **grew** from 2022-2023
- Sidewalk Survey (C. Elmira) completed 2023: **deficient sidewalks** are concentrated in census tracts with low income
- I-86 primary truck freight corridor; **truck routes** in C. of Elmira to be balanced with pedestrian needs
- Rail lines owned by Norfolk Southern (NS) service from Buffalo to NYNJ
- Elmira Corning Regional Airport: **most air freight** carried via Syracuse airport



CHEMUNG COUNTY COMPREHENSIVE PLAN

Key Findings from the Inventory Process

Figure 2-1. Mitigation Planning Process



Mitigation Planning Process, Chemung County Hazard Mitigation Plan (2019)

Environmental Resiliency

- One Consolidated Agricultural District
- Certified Climate Smart Community (2022)
- Hazard Mitigation Plan (2019)
- Tree Mitigation Program (Building Resilient Infrastructure and Communities Grant)
- Local Waterfront Revitalization Program (in progress)
- Green infrastructure & flood control concentrated in City of Elmira along Chemung River to address longstanding flooding concerns

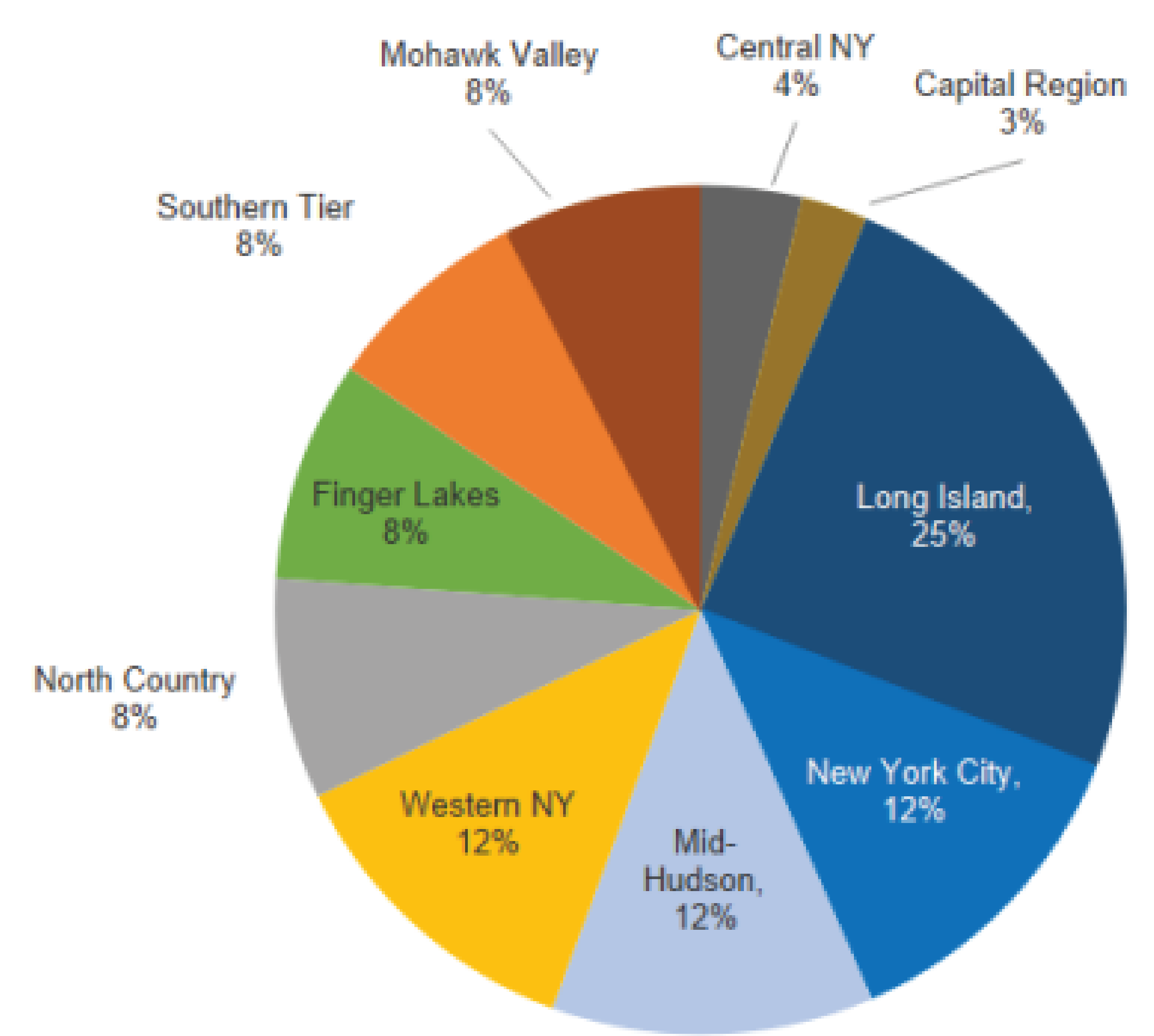


Lead pipe replacement in Elmira, courtesy of Press & Sun Bulletin, June 2022

Public Health

- Lead exposure and prevalence of environmental remediation sites are large public health concerns in County
- County has higher rates of diabetes, obesity, lung cancer, and chronic respiratory disease than NYS
- Planning strategies can help influence transportation, development, and land use patterns that impact public health

Distribution of People Without Broadband Available in New York State, by Region, 2019

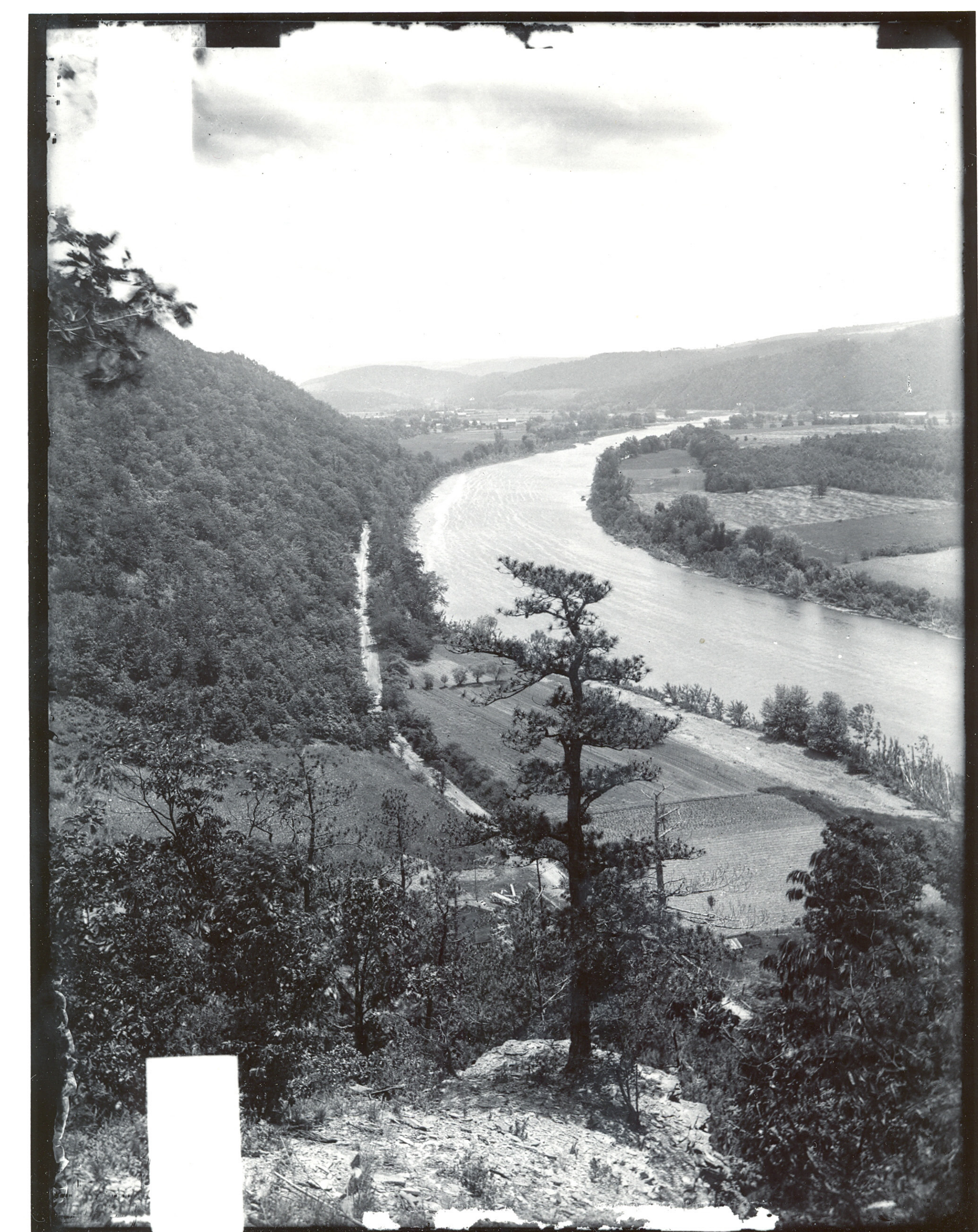


Note: Based on a 25/3 Mbps standard relied on by the Federal Communications Commission.
 Source: Office of the State Comptroller analysis of Federal Communications Commission, Fourteenth Broadband Deployment Report, January 19, 2021

Broadband Availability Graph from 2021 report, "Availability, Access, and Affordability: Understanding Broadband Challenges in New York State"

Utilities and Infrastructure

- 80% residents serviced by public water
- Sewer system covering 4,300 acres and over 45,000 people. Two sewer districts covering City of Elmira, Village of Elmira Heights, portions of Village of Horseheads & Towns of Elmira, Horseheads, Veteran, and Big Flats.
- NYSEG is predominant electrical/gas supplier in County
- Historically, rural areas have lacked broadband access; several County/regional agencies are working on studying and improving access with the County budgeting more than \$1 million in 2023



Chemung River, courtesy of Chemung County Historical Society

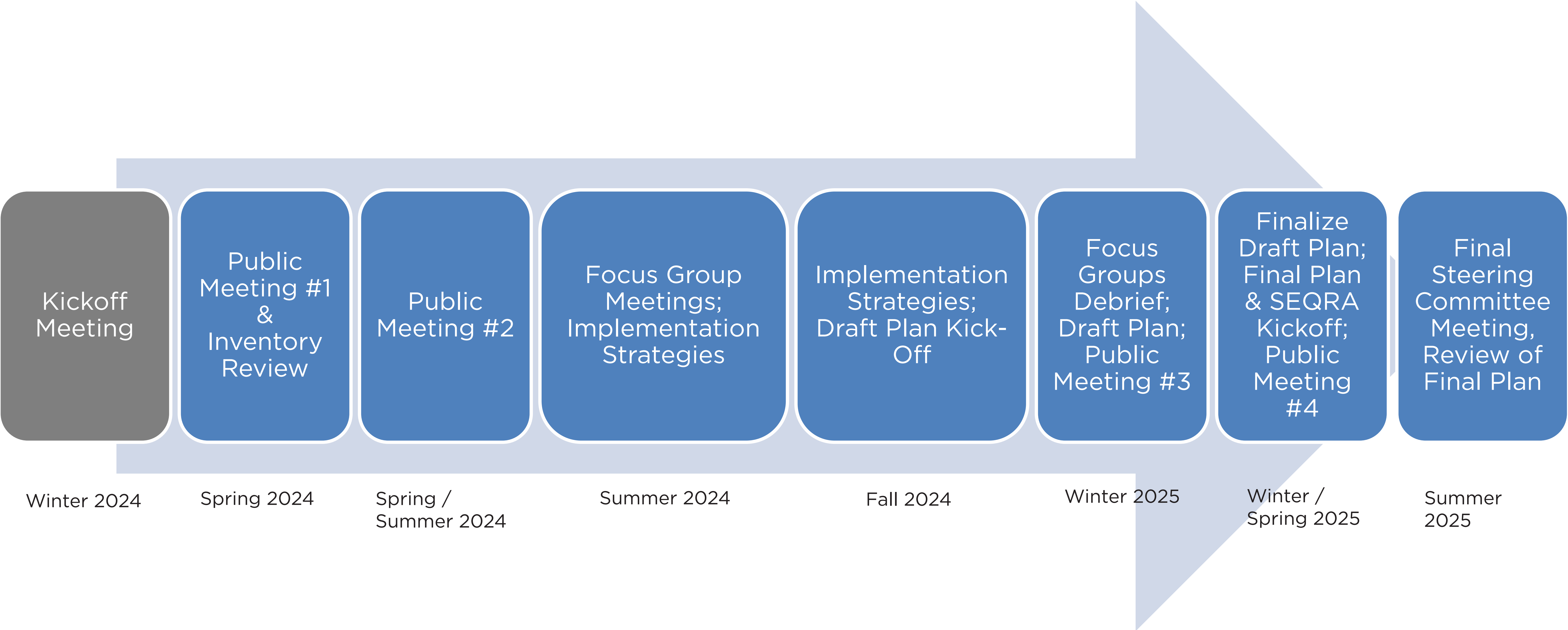
Cultural Resources

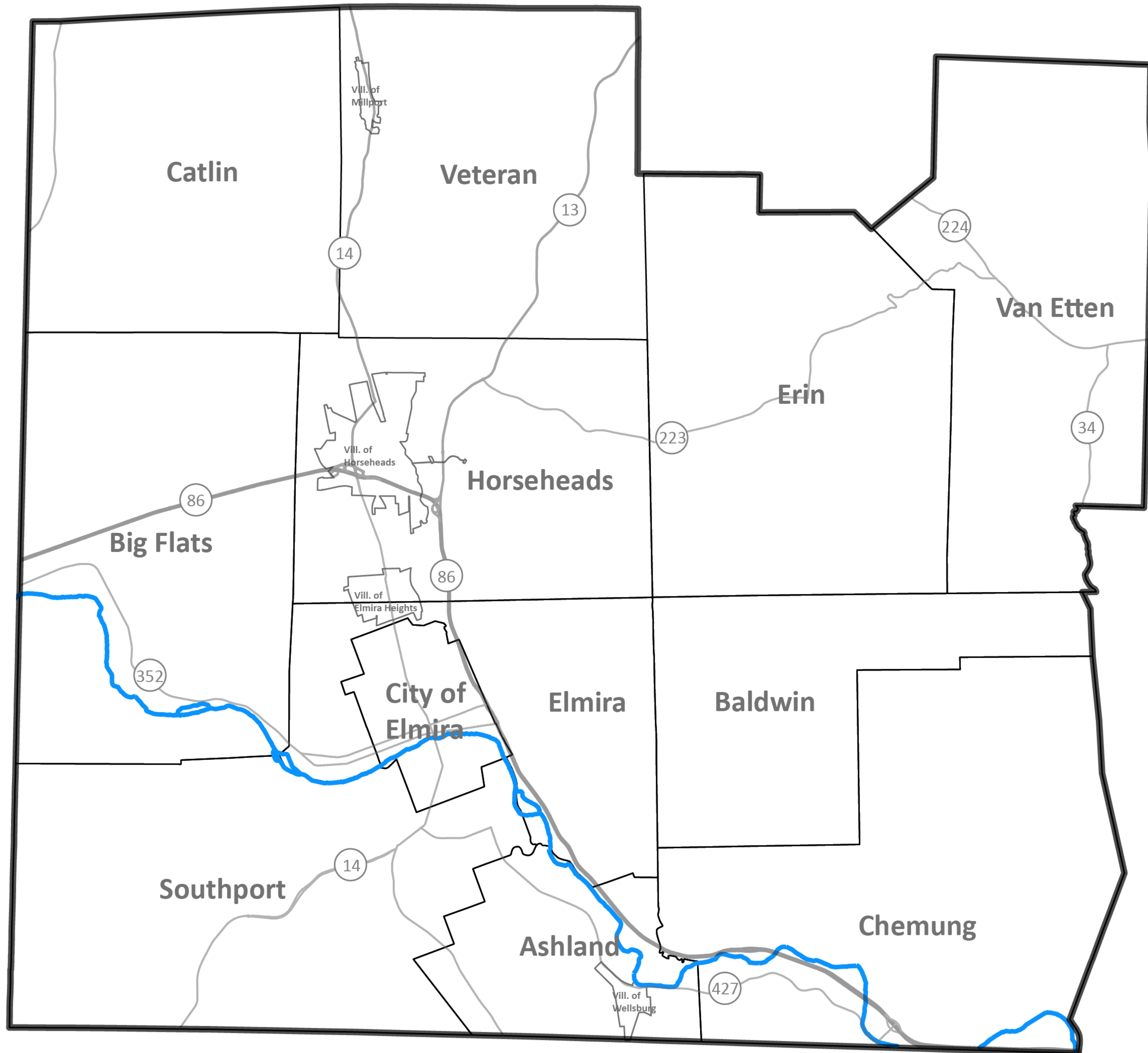
- 48 National Register-listed Buildings (excludes buildings in National Register-listed Building Districts); concentrated in Chemung, Big Flats, Horseheads, and Elmira
- 18 National Register-listed Building Districts; concentrated in Chemung, Big Flats, Horseheads, and Elmira
- 176 National Register-eligible Buildings
- Archaeologically sensitive areas also concentrated in Chemung, Big Flats, Horseheads, and Elmira
- Chemung County Historical Society & Museum is the local expert on the County's historic and cultural resources



Public Engagement Schedule

Eight total steering committee meetings throughout the course of the planning process





Please review the questions and note them in the box below.

What do you love about Chemung County?

What are the challenges currently facing the County?

What opportunities do you see for the County?

What are your top five priorities for the County?