



THE CHEMUNG COUNTY COMPREHENSIVE PLAN

PUBLIC MEETING # 1 SUMMARY

Public Meeting #1 – Thursday, May 30th, 2024, 6:00 PM – 8:00 PM
Ernie Davis Community Center
Prepared by Highland Planning

TABLE OF CONTENTS

<i>Meeting Overview:</i>	2
<i>Attendees:</i>	2
<i>Consultant Team In Attendance:</i>	3
<i>Themes and Priorities from Group Exercise</i>	4
<i>Appendix A: Presentation</i>	9
<i>Appendix B: Group Discussion Posters</i>	24

MEETING OVERVIEW:

County Planning Commissioner Kevin Meindl welcomed the community to the public meeting. The consultant team’s Project Manager, Frank Armento with Fisher Associates, then introduced the project team and presented an overview of the three planning initiatives: the first-ever County Comprehensive Plan, an Agricultural and Farmland Protection Plan, and a Long-Range Transportation Plan. The presentation also included the preliminary findings from the inventory review and the project schedule. The full presentation is available in Appendix A.

After the presentation, Megan Morsch, Public Engagement Lead at Highland Planning, facilitated the small group activity. Participants talked in small groups to identify strengths, challenges, and opportunities for Chemung County. These group discussions concluded with each group sharing their top five priorities with all meeting participants.

ATTENDEES:

Thirty-three participants signed in at the meeting.

First Name	Last Name	Organization
Rickey	Paul	Chemung County Landlord Association
Max	C	WENY News
Andrea	Ogunwumi	Economic Opportunity Program (EOP)
Sean	McGranaghan	Chemung County Planning Department
Terel	Marshburn	IncubatorWorks
Charmaine	Marshburn	NYSED ACCESS-VR
Meg	Magnusen	Economic Opportunity Program (EOP)
Elisabeth	May	Economic Opportunity Program (EOP)
Chalanda	Graham	Economic Opportunity Program (EOP)
Andrew	Avery	Chemung County DPW
Liane	O’Brien	IncubatorWorks
Courtney	Dunn	Chemung County Planning Department
Bill	Brodginski	Economic Opportunity Program (EOP)
Jerod	Buell	
Marilyn	Paulo	Elmira City Council
Sue	Phillips	Economic Opportunity Program (EOP)
Brittany	Gilbert	His Tabernacle
Charmain	Cattan	
Andy	Manganaro	Mangopalooza
Beth	Stranges	Chemung County Department of Aging

Kelly	Cooper	
Bill	Brougham	
Tanisha	Logan-Lattimore	Moving On Up Childcare
Herbert	Smith	Man 2 Man Forum
Nan	Moss	Elmira City Council
Shawnya	France	Retta's Heart Foundation
Winston	Wolf	Town of Veteran
Anita	Lewis	Economic Opportunity Program (EOP)
RR	Terny	LECOM
Lynne	Rusinko	Community Arts of Elmira
Joe	Caparulo	Community Arts of Elmira
Amanda	Arduini	
Cody	Spencer	His Tabernacle

CONSULTANT TEAM IN ATTENDANCE:

Frank Armento, AICP CEP, Manager, Environmental & Planning Group, Fisher Associates

Andrea He, Planner, Fisher Associates

Tyler Kutty, Planner, Fisher Associates

Megan Morsch, Public Engagement Lead, Highland Planning

Heike Jacob, AICP, Senior Planner, Highland Planning

THEMES AND PRIORITIES FROM GROUP EXERCISE



Each group of 4-5 participants discussed four questions and wrote their answers on the posters:

- What do you love about Chemung County?
- What are the challenges currently facing the County?
- What opportunity do you see for the County?
- What are your top five priorities for the County?

Themes from the responses to each of these questions are summarized below:

What do you love about Chemung County?

- Parks and access to parks/nature (places to swim, fish, hunt, boat, hike, bike, etc.)
- Agriculture
- Culture and history
- Location (central to NYS, close to other large urban areas)
- Sense of community
- Diversity

- Low cost of living
- Access to services/health facilities
- Educational facilities (BOCES, Elmira, ECC)
- Family-friendly/friendly for all ages
- Public transportation
- Small town feel with easy access to amenities

What are the challenges currently facing the County?

- Poverty, lack of high quality jobs
- Lack of property maintenance/zombie properties
- Aging infrastructure
- Crime/violence
- Vacancy
- Declining/aging population
- Insufficient public transportation limiting access to jobs
- Affordability of housing/homelessness, need for more housing options (multifamily)
- Public health and quality of healthcare providers
- Drug addiction
- Barriers to accessing services (income limits, awareness of programs, etc.)
- Need for more youth programming

What opportunities do you see for the County?

- Economic development (small/local businesses, light manufacturing)
- Education/workforce development (training programs for skilled jobs, expanding STEM program at ECC)
- Ecotourism/tourism
- Improve public transportation (extend hours, add routes, etc.)
- Increase childcare options (more weekend/evening availability)
- Pursue state/federal grants to alleviate poverty
- Redevelop vacant/underutilized sites like Arnot Mall and Southport Prison
- Increase number and diversity of retail stores/restaurants
- Market events/activities
- Improve access to/quality of healthcare

What are your top five priorities for the County?

- Affordable housing/housing security
- Food security
- Economic development, job creation, and expanding tax base
- Alleviating poverty
- Supporting/preserving agriculture, local food system
- Improving public health, access to healthcare for everyone (esp. mental health, drug treatment, etc.)
- Attracting and retaining young people and families, remote workers
- Improving public transportation

- Completing trail system
- Improving childcare and youth services
- Equity

Below is a summary of each group's report out to the group:

Group 1:

Group 1 highlighted what they love about Chemung County, including the parks, golf courses, and "beautiful river that runs through Chemung County." They appreciated the healthcare facilities and sense of community, noting "We have, like I said, all ages." For challenges, they mentioned funding, poverty, affordable housing, healthcare/dental access, mental health services, and "zombie properties." They emphasized the need for "intensive case managers." Opportunities they saw included economic development, tourism, "Federal funding for poverty" programs, and "Workforce investment and trades." They noted, "Everybody's not going to college... we want to be able to not just bridge those kids to college, but to a trade."

Their top 5 priorities were: 1) poverty, 2) health equity, 3) "affordable safe housing with case management", 4) economic development in small businesses, and 5) mental health, dental and drug treatment.

Group 2:

Group 2 loved Chemung County's "amazing rich history", "Easy access to places like stores", access to nature and parks, and diversity. Challenges they noted included access to medical/entitlement services, drug addiction, homelessness, gun violence, lack of youth activities, affordable housing, and transportation limitations impacting employment. They provided specific examples, such as when "Southern Tier Pediatrics pulled out and moved to Horseheads" creating healthcare access issues, and "We've had a lot of clients that... have had jobs up by the mall as wait staff and because of the buses stopped running in the evenings, they have no means to get back into town. So literally they've just quit their jobs." Opportunities included leveraging the "access to fresh water here. Something that we don't really think about very often," entitlement services, collaboration with higher education institutions, and employment/workforce development.

Their top 5 priorities included improving "substance use and mental health services," noting they've found people "on a wait list for... just to be able to see a therapist for over a year."

Group 3

Group 3 appreciated the county's "nice manageable size Community", available programs, diversity, and family-oriented events. Challenges included lack of programs for aging adults, building accessibility issues ("We have some places where they have flights of stairs rather than... everything is on the first floor for them to get to"), need to engage youth ("a lot of times

they feel as though, They don't have a voice, they don't have any say"), transportation limitations, and eligibility barriers for programs. Opportunities they saw included "incentives for hiring in between social status", "non-traditional childcare options and hours", skill training, more retail downtown, and expanded transportation.

Their top 5 priorities were: 1) "Adequate transportation", 2) "Access to healthcare for everyone", 3) childcare and youth programs, 4) food security, and 5) housing security.

Group 4:

Group 4 loved the lack of pollution/traffic, "short commutes" ("You don't have to travel. Literally anywhere, or you could get anywhere within 10 to 15 minutes"), low cost of living, family connections, open spaces, youth sports opportunities, and ice cream shops. Challenges included crime, job opportunities, public health issues, and the need for "Open, shared affordable office space". Opportunities they saw included job creation in manufacturing/tech, supporting entrepreneurs, marketing events/activities, diversifying transportation options, and "food trucks, permit locations". They suggested establishing "one space and have multiple trucks there on a regular basis that's Central to a lot of the businesses."

Their top 5 priorities included "Job creation in the city close to housing", expanding the tax base with diverse businesses, developing existing assets, youth/family retention, and creating safe spaces for youth activities.

Group 5

Group 5 appreciated the hills/countryside, river system, "central location in New York State" ("the Gateway of the Northeast"), highway access, and educational opportunities like BOCES. Challenges included homelessness, low-paying jobs ("Yes, we have our teachers. Yes, we have our nurses, but the high paying jobs that exist Health Care wise... Your travel nurses. They come, they go. They don't, they don't stay"), high taxes, poor communication about events, aging housing stock, and lack of adult training programs. Opportunities included expanding public transit, "Finding our identity" as a county and becoming "a welcoming place a place that people after you've traveled... want to go?", equalizing property assessments, and incubating creative spaces for talented locals.

Their top 5 priorities included "equalizing the assessments both for undervalued places and then overvalue places", addressing poverty, supporting local businesses, providing health/wellness resources, improving transportation, and addressing crime.

Group 6:

Group 6 loved the "Outdoor opportunities fishing on a smoking. Fighting vote voting... and bicycling", proximity to urban areas, historic housing stock, airport, and arts/cultural attractions. Challenges included declining/aging population, "decreasing state investment and

infrastructure", inflation, and need for after-school programs. Opportunities included redeveloping housing stock, promoting locally-owned shops, "Ecotourism kayaking and bicycling", leveraging college connections, and "Redevelop solar prison site for something new".

Their top 5 priorities were attracting/retaining young people, "Complete the trail system, north and south from east to west across town", increasing youth mentorship in arts/culture, developing sustainable agriculture, and "Draw new work from home residents" by leveraging the upcoming "full grown, fiber network".

Documentation of each small group's written responses is provided in Appendix B.



AGENDA

- Welcome and Introductions
- Project Overview Presentation
- Small Group Discussions
- Wrap Up & Next Steps

PROJECT TEAM



Chemung County Partners



Elmira-Chemung Transportation Council

Consultant Team



SWBR



Decision Statement

Over the next year, the Chemung County Planning Department is leading the development of three planning initiatives: (1) a County Comprehensive Plan, (2) an Agricultural and Farmland Protection Plan, and (3) a Long-Range Transportation Plan. In 2025, the Chemung County Legislature will adopt the County Comprehensive Plan and the Agricultural and Farmland Protection Plan after recommendation by the County Planning Board and Ag and Farmland Protection Board. The Elmira-Chemung Transportation Committee will adopt the Long-Range Transportation Plan. The plans will be used to establish and define a long-range vision with broad community support and buy-in, coordinate various county efforts, enhance transparency, and direct investment and program activities in Chemung County.

Comprehensive Plan

- First Comprehensive Plan developed for Chemung County
- Catalogue existing environmental, historical, agricultural, demographic and socio-economic trends in the County
- Develop short- and long-term goals and a vision for the future of the County
- Develop implementation strategies and recommendations including identification of projects, programs, and initiatives to facilitate various goals



Comprehensive Plan

Process and Purpose of a Comprehensive Plan



Comprehensive Plan

Benefits of a Comprehensive Plan



Develop a unified vision for the growth, development, protection, and future of the County



Create a roadmap for a variety of infrastructural, economic, and community-oriented projects



Guide future land use decisions and development with the needs and desires of the community at the forefront



Identify Opportunities for Additional Studies and Planning Efforts

Comprehensive Plan

Potential Funding Implications



Provide a framework for future budget decisions



Allocation of funding towards priority projects and initiatives



Support communities and municipalities in pursuing grant funding opportunities

Long Range Transportation Plan

- Existing Plan: 2040 Long Range Transportation Plan adopted in 2019
- Analyze the existing transportation system and infrastructural / natural / cultural systems that influence the system
- Create a series of strategies for making transportation investments over the next twenty years
- Create a financial plan with projects over a twenty-year period
- Identify implementation strategies and recommendations for short-, medium- and long-term projects, programs and initiatives



Agriculture and Farmland Protection Plan

- Existing Plan: Agricultural Economic Development Plan adopted in 2011
- **Data gathering phase, analysis and findings** that document local conditions and issues, production, current markets, potential markets, and potential production to serve those markets.
- Identify **potential farmland** based on soil classification, inclusion in New York State Agricultural Districts, land receiving Agricultural Assessments, and underutilized but viable farmlands
- Create a series of **implementation strategies** and recommendations for supporting the County's agricultural industry over the next ten years
- Analyze **existing regulatory frameworks and regulations** that govern the agricultural economy in the county



Inventory Review

Technical Memorandums

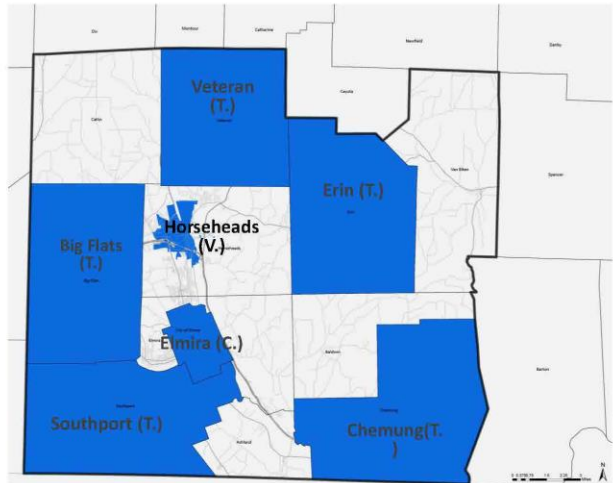
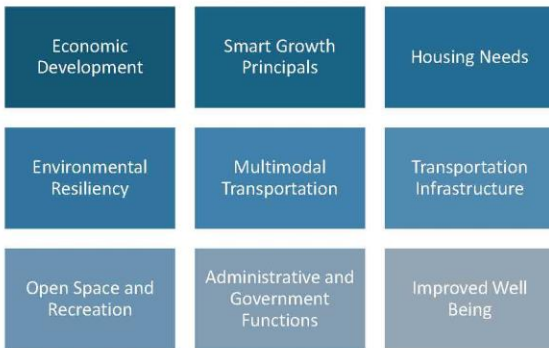


Inventory Review

Municipal Comprehensive Plans



Common Themes:



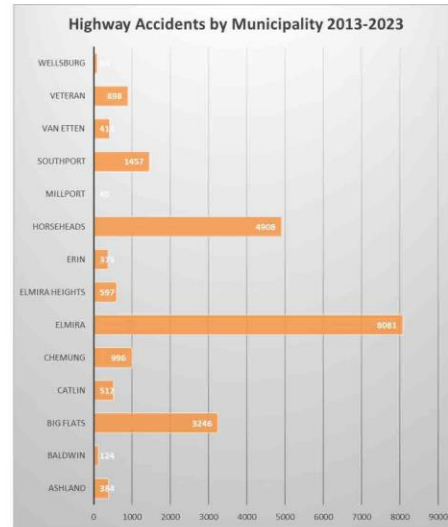
Municipalities in Chemung County with completed comprehensive plans

Inventory Review

Mobility



- 40% roads are “Local Rural” per NYSDOT and FHWA
- >22,000 collisions in County, 2013-2023, predominantly in City of Elmira
- +250 bridges, 82% of bridges were scored as “fair” by NYSDOT
- C-TRAN service grew from 2022-2023
- Sidewalk Survey (C. Elmira) completed 2023: deficient sidewalks are concentrated in census tracts with low income
- I-86 primary truck freight corridor; truck routes in C. of Elmira to be balanced with pedestrian needs
- Rail lines owned by Norfolk Southern (NS) service from Buffalo to NYNJ
- Elmira Corning Regional Airport: most air freight carried via Syracuse airport



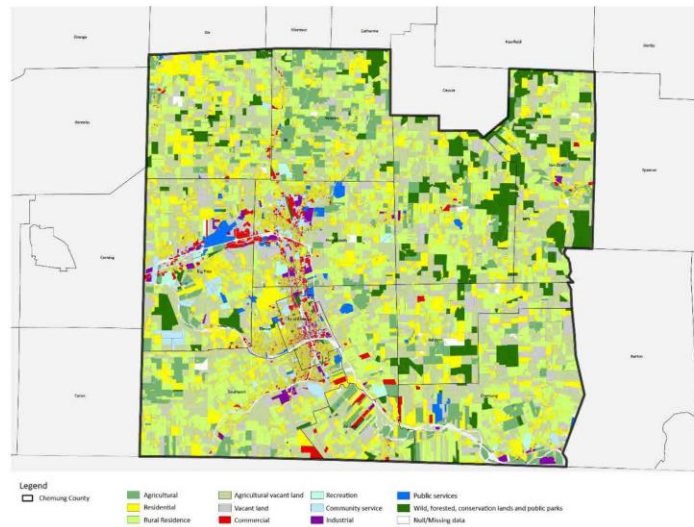
Highway Accidents by Municipality in Chemung County, 2013-2023

Inventory Review

Land Use



- Land Use
 - Predominantly agricultural
 - Highest densities in City of Elmira and Horseheads
- Zoning:
 - Zoning regulations are set individually by municipalities and therefore are not the same County-wide
 - Most municipalities' zoning districts encourage agriculture and have relatively simple zoning
 - City of Elmira is an exception, with 16 zoning districts



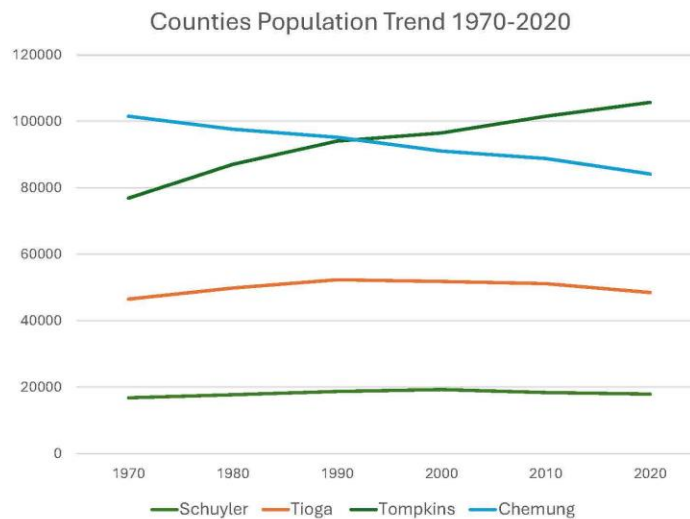
Agricultural Land Use



Inventory Review

Demographics

- Trending **downward**:
 - Total Population
 - Unemployment rate
- Trending **upward**:
 - % older residents
 - % residents identifying as diverse race/ethnicity
- Other trends:
 - City of Elmira has **greatest diversity** in County
 - **Lower** rates of higher education than NYS average
 - **Lower** Median Household Income than NYS median



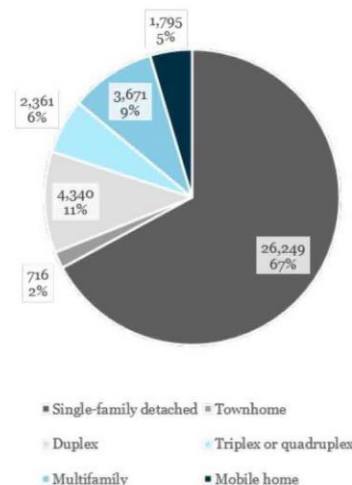
Population Trends in Chemung County and Surrounding Counties



Inventory Review

Housing

- Excess vacancy rate and pent-up housing demand
- Most single-family homes are too large for current household sizes
- **Single-Family Detached** are most common homes in County
- High demand for **multifamily homes for rent**
- **More affordable housing options** than surrounding Counties, but many residents are still **cost-burdened**



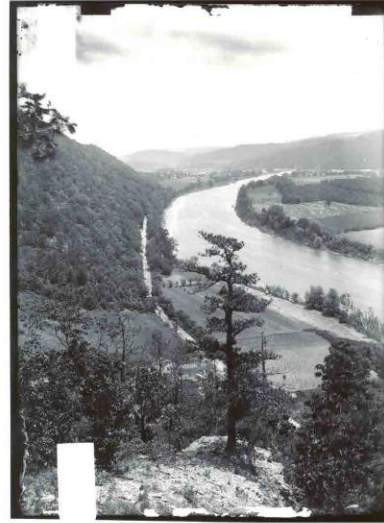
Housing Stock Breakdown

Inventory Review

Cultural Resources



- **48** National Register-listed Buildings
- **18** National Register-listed Building Districts
- **176** National Register-eligible Buildings
- **Archaeologically sensitive areas** also concentrated in Chemung, Big Flats, Horseheads, and Elmira
- Chemung County Historical Society & Museum is the local expert on the County's historic and cultural resources



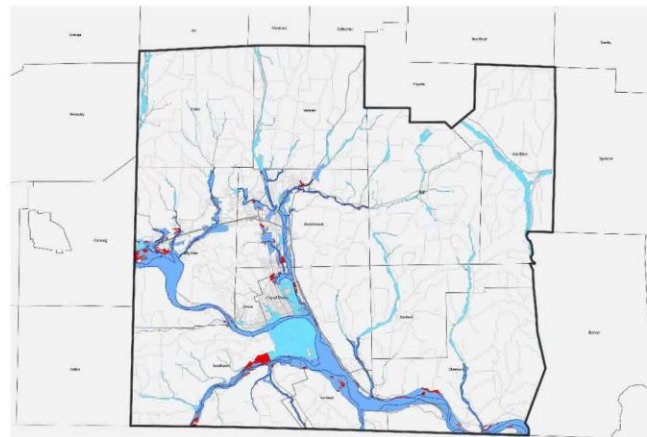
Chemung River, courtesy of Chemung County Historical Society

Inventory Review

Natural/Scenic Resources



- **64%** of soils are Prime Farmland, Farmland of Statewide Importance or Prime Farmland if Drained
- **3** major watersheds
- **7** major rivers/streams
- **5,460 acres** of NWI mapped wetland
- Large floodplain around Chemung River, history of **major floods**
- **5** New York State Department of Environmental Conservation Significant Natural Communities



Floodplains in Chemung County



Inventory Review

Environmental Resiliency

- Infrastructure and flood control to address Chemung River **flooding concerns**.
- Existing **Resiliency Plans** :
 - Certified Climate Smart Community (2022)
 - Hazard Mitigation Plan (2019)
- Tree Mitigation Program (Building Resilient Infrastructure and Communities Grant)
- Local Waterfront Revitalization Program (in progress)

Figure 2-1. Mitigation Planning Process



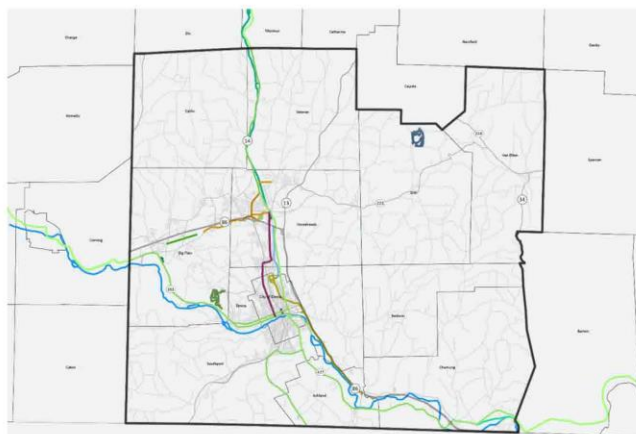
Mitigation Planning Process, Chemung County Hazard Mitigation Plan (2019)

Inventory Review

Parks and Open Space



- **80 recreation areas**
- **3 County parks**
- Various **trails and state parks** throughout the County
- **Rinks, sports fields, and athletic centers** throughout County
- **Boat launches** and kayaking along Chemung River
- +800 acres of **golf courses**
- Chemung County **Youth Bureau** programs



Trails in Chemung County

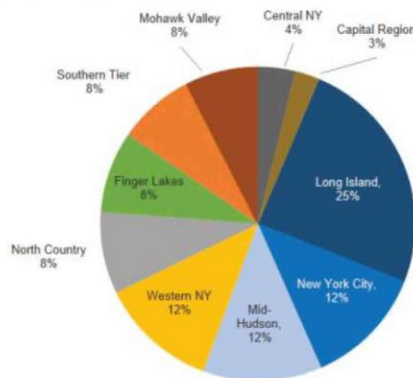


Inventory Review

Utilities and Infrastructure

- **80%** residents serviced by public water
- Sewer system covering **4,300 acres** and over **45,000 people**. **Two sewer districts**
- **NYSEG** is predominant electrical/gas supplier in County
- County/regional agencies are working on studying and **improving access** with the County budgeting more than \$1 million in 2023

Distribution of People Without Broadband Available in New York State, by Region, 2019



Note: Based on a 25/3 Mbps standard relied on by the Federal Communications Commission.

Source: Office of the State Comptroller analysis of Federal Communications Commission, Fourteenth Broadband Deployment Report, January 19, 2021

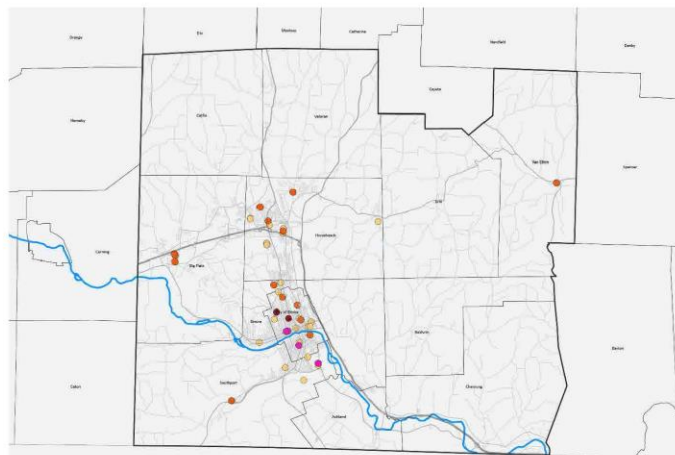
Broadband Availability Graph from 2021 report, "Availability, Access, and Affordability: Understanding Broadband Challenges in New York State"

Inventory Review

Education and Community Facilities



- **39** K-12, Kindergarten, and schools for at-risk youth
- **3** Higher Education Institutions
- **5** municipalities served by County Library District
- **11** Fire Departments
- Chemung County Fairgrounds



K-12 and Higher Education Institutions in Chemung County

Inventory Review

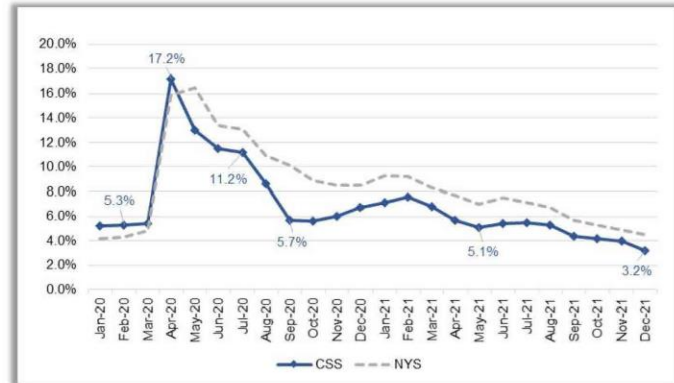
Economy



- **Workforce Development** crucial consideration for all regional partners and major employers
- Major Industries: **Health Care, Manufacturing, Retail Trade**
- The **agricultural industry** is critical to the County's identity and land use
- **Unemployment** grew in 2020, but dropped below NYS average in 2021
- REDC Southern Tier 2023 Strategic Plan indicates a **4% drop in tourism** to Chemung County

Figure 5: Monthly Unemployment Rates, 2020-21, Chemung-Schuyler-Steuben and NYS

Source: NYS Department of Labor, Local Area Unemployment Statistics



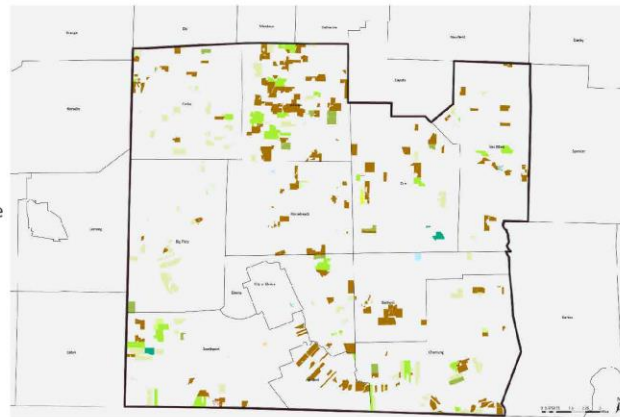
Unemployment Rates in Chemung, Schuyler, and Steuben Counties & New York State

Inventory Review

Agriculture



- **One** Agricultural District (consolidated in 2018)
- **352** Farms which has **decreased in number of farms (2002-2022)**; total acreage of farmland has also decreased (2002-2022)
- **\$34,453,000** total farm sales (2022), has almost tripled since 2002
- Highest crop cover is **forage** (hay, haylage, grass silage, green chop) then **corn**
- Lower **market value per acre** than Schuyler and Tompkins counties; higher than Tioga county



Agricultural Land Use

Inventory Review

Public Health



- **Lead exposure** and **prevalence of environmental remediation sites** are large public health concerns in County
- County has higher rates of **diabetes, obesity, lung cancer, and chronic respiratory disease** than NYS
- Planning strategies can help influence transportation, development, and land use patterns that impact public health



Lead pipe replacement in Elmira, courtesy of Press & Sun Bulletin, June 2022

Project Website



<https://www.chemungcountyny.gov/CompPlan>

Services Resources/Activities Business

THE CHEMUNG COUNTY COMPREHENSIVE PLAN

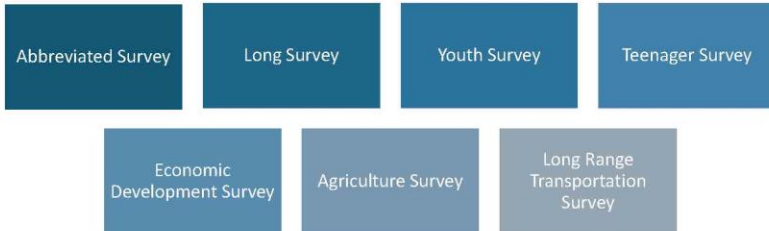
Chemung County is developing a Comprehensive Plan to shape the future of our communities! This plan will build consensus around a vision for the County and identify actionable strategies for topics like land use, economic growth, agriculture, transportation, housing, sustainability, resilience and more. The Comprehensive Plan is a living document with a long-term outlook that is updated periodically to respond to evolving growth and conditions in the County.

What is a Comprehensive Plan?

A Comprehensive Plan establishes a community-based vision for the future and identifies priorities and strategies across inter-connected key opportunity areas such as land use, transportation, economic development, and sustainability. It guides future land use decision making and development with the needs and desires of the

Public Engagement Surveys

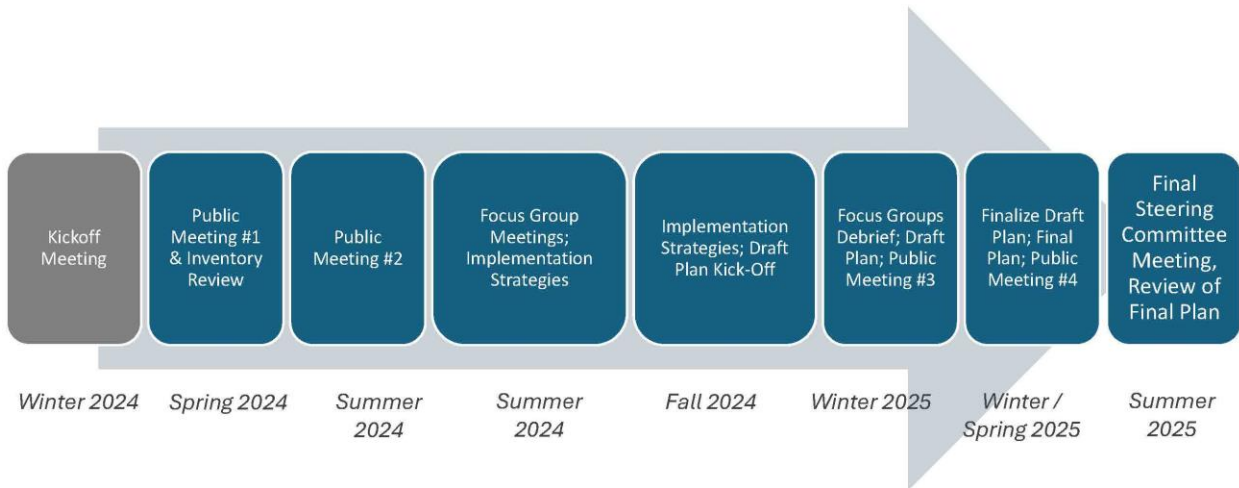
- Surveys have been developed for various audiences:



<https://www.chemungcountyny.gov/CompPlan>



Schedule



Small Group Discussions

1. What do you love about Chemung County?
2. What are the challenges currently facing the County?
3. What opportunities do you see for the County?
4. What are your top five priorities for the County?



Key Contact Information

County Contact

Chemung County Planning
Department

Email: planning@chemungcountyny.gov
Phone: (607) 737-5510

Consultant Team

Frank Armento, AICP
Fisher Associates
Planning Studio Manager

Email: farmento@fisherassoc.com
Phone: (716) 858-1234 ext. 306

Sarah Martin, AICP
Fisher Associates
Associate Planner

Email: smartin@fisherassoc.com
Phone: (716) 858-1234 ext. 321

CHEMUNG COUNTY COMPREHENSIVE PLAN



Let's put your 'Chemung County Ambassador' hats on and dive into these thought-provoking questions together:

Remember, your diverse perspectives and experiences are invaluable. Listen actively, build upon each other's ideas, and don't be afraid to think outside the box. Jot down your group's brilliant ideas, because we can't wait for you to share your insights with the larger room afterwards. Get ready to inspire us all with your passion for Chemung County!

What do you love about Chemung County?

- Parks, walkability
- Golf courses
- River
- we've done a lot of work
- Friendly for all ages
- LECOM
- Sense of community
- People care
- Generational + intergenerational
- Youth programs
- Transportation (Public)
- Agriculture
- Food Bank
- Social services

What are the challenges currently facing the County?

- Funding
- Poverty
- Healthcare + Dental
- Affordable housing
- mental health services
- Drug treatment
- intensive case management
- Disrepair, aesthetic, zombie properties
- Collaboration in county leadership
- Crime, violence
- Re-entry programs
- Funding for education + collaboration
- Bridge to higher education

What opportunities do you see for the County?

- Economic development
- Businesses
- Tourism
- Grants, federal funding for poverty
- we have the right people in place to see growth
- Comprehensive community healthcare
- workforce + investment in trades
- Greater collaboration with local and state

What are your top five priorities for the County?

- Poverty
- Health and equity
- Affordable, safe housing with case management
- Economic development
 - ↳ small businesses
- Mental health and dental
 - * Drug treatment

CHEMUNG COUNTY COMPREHENSIVE PLAN



Let's put your 'Chemung County Ambassador' hats on and dive into these thought-provoking questions together:

Remember, your diverse perspectives and experiences are invaluable. Listen actively, build upon each other's ideas, and don't be afraid to think outside the box. Jot down your group's brilliant ideas, because we can't wait for you to share your insights with the larger room afterwards. Get ready to inspire us all with your passion for Chemung County!

What do you love about Chemung County?

- Rich History
- Easy Access to places like stores, etc.
- Access to Nature
- Diversity
- Park Access
- Access to some public services

What I love about Chemung County:
- Rich history
- Easy access to places like stores, etc.
- Access to nature
- Diversity
- Park access
- Access to some public services

What are the challenges currently facing the County?

- Access to some medical entitlement services
↳ pediatrician / ss
- Drug addiction
- Homelessness
- Gun / other violence
- Vacant lots in city
- Activities for youth + young adult
- Affordable quality housing for low + extremely low income housing
- Transportation + impact to access to employment

What opportunities do you see for the County?

- Access to freshwater
- Entitlements → somewhat easy to access, more so than some counties
- Collaboration with Elmira College, LECCOM, ELCCC to educate + volunteer
- Employment + Workforce Development

Opportunities:
- Access to fresh water
- Entitlements somewhat easy to access, more so than some counties
- Collaboration with Elmira College, LECCOM, ELCCC to educate + volunteer

What are your top five priorities for the County?

- 1) Affordable quality housing for ALL Income Levels
- 2) Increasing + Improving substance use + mental health services
- 3) Access to affordable transportation
- 4) Access to childcare + youth services / activities
- 5) Access to medical + entitlement services + education on utilization of benefits

CHEMUNG COUNTY COMPREHENSIVE PLAN



Let's put your 'Chemung County Ambassador' hats on and dive into these thought-provoking questions together:

Remember, your diverse perspectives and experiences are invaluable. Listen actively, build upon each other's ideas, and don't be afraid to think outside the box. Jot down your group's brilliant ideas, because we can't wait for you to share your insights with the larger room afterwards. Get ready to inspire us all with your passion for Chemung County!

What do you love about Chemung County?

The people
nice manageable size community
Programs available
Diverse in programs
family oriented programs/events

What are the challenges currently facing the County?

- Lacking programs for aging adults
- Multigenerational lens
 - i.e. easy access to buildings
- Encouraging the youth
 - involvement in community
 - furthering themselves
 - they have a voice!!
- Transportation
- Sharing knowledge
- eligibility for programs
 - Paperwork - Parents unable/unwilling
 - income eligibility
 - people just over

What opportunities do you see for the County?

- Incentives for hiring in between social status
 - door opener opportunities
- Child care options - more non-traditional
- Scholarships for training!
- Incentives for keeping/returning professionals
- Skilled trainings
- Retail downtown
- Better transportation
- easier access
- Restaurants - later more diversity

What are your top five priorities for the County?

- adequate transportation
- access to health care - for everyone
- child & youth care - more accessible
- food security
- housing security

CHEMUNG COUNTY COMPREHENSIVE PLAN



Let's put your 'Chemung County Ambassador' hats on and dive into these thought-provoking questions together:

Remember, your diverse perspectives and experiences are invaluable. Listen actively, build upon each other's ideas, and don't be afraid to think outside the box. Jot down your group's brilliant ideas, because we can't wait for you to share your insights with the larger room afterwards. Get ready to inspire us all with your passion for Chemung County!

What do you love about Chemung County?

- Not a lot of pollution, people or traffic [air quality]
- Short commutes
- Low cost of living
- Family connections
- Open spaces
- Youth sports opportunities
- Fair shake / King Cone / The Last Stand etc.

What are the challenges currently facing the County?

- Eliminate/lower crime by keeping people productive
- Job opportunities
- Public health (obesity etc, STDs, etc)
- Uneven sidewalks (or no sidewalks) inhibit walking
- Addiction
- Mental health
- Homelessness
- Sustainable income opportunities
- Open share/affordable office space (for example → WeWork-like spaces)
- Health care providers (or lack of)
 - ↳ Antiquated techniques / lack of standards

What opportunities do you see for the County?

- Job creation (light mfg, STEM, low/med/high tech)
- Support Entrepreneurs in the creation + funding + development of ~~business~~ business plans + getting established (1st 5 yrs)
- Marketing things to do (Weekend + evening activities)
- Increase activities at First Arena + JoyCrest, etc.
- Diversify public transportation routes + options
- Redevelop Arnot Mall
- Food truck [permanent] location?

What are your top five priorities for the County?

- Job creation in the City close to housing
- Expand taxpayer base in the City
- Bring in Taxpayers that are business owners + culturally + technologically diverse.
- Developing further assets that are already here
- Youth + Family Retention
 - ↳ activities, permanent safe space, to spend energy
 - ↳ (dancing, computer labs, basketball courts, skating, etc.)
- Support existing ~~for~~ agriculture

CHEMUNG COUNTY COMPREHENSIVE PLAN



Let's put your 'Chemung County Ambassador' hats on and dive into these thought-provoking questions together:

Remember, your diverse perspectives and experiences are invaluable. Listen actively, build upon each other's ideas, and don't be afraid to think outside the box. Jot down your group's brilliant ideas, because we can't wait for you to share your insights with the larger room afterwards. Get ready to inspire us all with your passion for Chemung County!

What do you love about Chemung County?

- Hills, Country Side
- River system
- Central to NYS
- History
- Great Highway System
- Access to POSES
- Elmira
- CCC

What are the challenges currently facing the County?

- Fatherlessness
- Low paying jobs
- TAXES
- Communication
- Aged Housing Stock
- Burnt/Zombie Properties
- Adult training programs
Electrical, Plumbing
Building, Masonry
- Healthcare System
- Little programs for Youth
- CRIME

What opportunities do you see for the County?

- Expansion of bus lines
- Finding Our identity
- Tourism
- History
- Real Estate/Vacant Homes
- Equalize Assesments in Underassessed and overassessed Areas

What are your top five priorities for the County?

- Life Safety
- Farms
↳ what kinds do we have
- Incubation of Business/Enteria
- Education (Everyday living)
- Economy

CHEMUNG COUNTY COMPREHENSIVE PLAN



Let's put your 'Chemung County Ambassador' hats on and dive into these thought-provoking questions together:

Remember, your diverse perspectives and experiences are invaluable. Listen actively, build upon each other's ideas, and don't be afraid to think outside the box. Jot down your group's brilliant ideas, because we can't wait for you to share your insights with the larger room afterwards. Get ready to inspire us all with your passion for Chemung County!

What do you love about Chemung County?

ELDRIDGE PARK
 COMMUNITY ASSETS
 LECOM - EC BROS
 DUNN FIELD
 HEALTH FACILITIES
 BURGESSING RENAISSANCE - CITY COMING BACK
 - COUNTRY LIVING
 COHESIVE
 LAW ENFORCEMENT
 QUALITY TOPOGRAPHY HILLS + VALLEYS

What are the challenges currently facing the County?

- * DECREASING POPULATION
- * INFLATION - GAS & GROCERIES
- * LACKING EMPLOYMENT OPPORTUNITIES AND EMPLOYEES TO FILL THEM
- * AGING INFRASTRUCTURE
- * BETTER CURRICULUM DEVELOPMENT
- * NO CASH BAIL!!!

What opportunities do you see for the County?

TOURISM - TIE IN IN EXISTING NATURAL RESOURCES TO ACTIVITIES FOR OVERALL ATTRACTIONS
 THE BIG PICTURE
 - ELDRIDGE PK + LAKE
 - ARENA
 - HARRIS HILL
 - RIVER
 - MUSEUMS
 - DUNN FIELD
 - TRAILWAYS
 - TRAILS
 - WILDER MARKET
 - SCARBIN'S
 - EST. PROMOTE EVENT DESTINATIONS
 - GOLF COURSES
 - MINIATURE GOLF
 - SPORTS COMPLEX
 - TOOT INVENTORS
 - HIGHEST CONCENTRATION VICTORIAN HOMES IN NEW YORK STATE
 GANCE OSCO PARTY AT ARENA COMMUNITY EVENT

What are your top five priorities for the County?

- * HIGH QUALITY JOBS
- * ATTRACTING BUSINESS (RETAIL) EX: COSTCO
- * CONCENTRATED REINVESTMENT
- * PRESERVING AGRICULTURE - PROMOTE LOCAL FARMING SUPPORT FINANCIALLY SECURE
- * ADDRESS HOMELESS + MENTAL HEALTH ISSUES -
- * MORE FUNDING TO DEMO PROPERTIES = BEAUTIFICATION

CHEMUNG COUNTY COMPREHENSIVE PLAN 1

Let's put your 'Chemung County Ambassador' hats on and dive into these thought-provoking questions together:

Remember, your diverse perspectives and experiences are invaluable. Listen actively, build upon each other's ideas, and don't be afraid to think outside the box. Jot down your group's brilliant ideas, because we can't wait for you to share your insights with the larger room afterwards. Get ready to inspire us all with your passion for Chemung County!

What do you love about Chemung County?

- SCENERY / OUTDOORS
- SMALL TOWN
- AIR PORT = CONVENIENT TRAVEL; LOTS OF DESTINATIONS
- HOME BUYING PRICES ARE LOW (COMPARED TO NEARBY)
- GREAT PARKS (HARRIS HILL + EMPOL)
- SWIMMING
- LOTS TO DO (DINE-IN)
- AVAILABILITY OF SERVICES (SCHOOLS; SHOPPING) LITTLE BIT OF EVERYTHING
- BEANCE BRAT (HUMAN SERVICE)
- COLLABORATION WITH RESOURCES

What are the challenges currently facing the County?

- UNUSUALLY AFFORDABLE RENTAL PRICES (EXTREMELY TO RENT)
- NOT A LOT OF VARIETY OF HOUSING OPTIONS (MULTI-FAMILY LIVING)
- OUT OF TOWN INVOLVING
- DRUGS (OPIUMS)
- LACK OF RESOURCES FOR OTHER ASPECTS (SCHOOL ADMINISTRATION)
- GUN VIOLENCE
- LIMITED HOUSING CAPACITY / RESOURCES ARE LIMITED (WHAT LIST)
- TRANSPORTATION (PUBLIC TRANSIT) (SCHOOL / EMPLOYMENT)
- HOMELESSNESS
- LOAD / PUBLIC HEALTH / RADIATION - ENVIRONMENTAL CONCERNS

What opportunities do you see for the County?

- NEW HOUSING / LEASING HOUSING
- MEDICAL SCHOOL
- NEW BUSINESS + FULL TIME JOBS w/ BENEFITS
- PARKS (SUCH AS EMPOL) PLACE FOR KIDS TO GO
- SOUTHPOINT PARKING SHED

What are your top five priorities for the County?

- ADDRESSING POVERTY
- SUPPORT + PROMOTE RESOURCES FOR LOCAL BUSINESS (INFO SHARING)
- RESOURCES FOR ALL AGES (MENTAL + PHYSICAL HEALTH) + MEDICAL CARE (MENTAL + PHYSICAL HEALTH)
- TRANSPORTATION (NETWORK) NOT JUST ROAD, BUT IN VARIOUS NEEDS TO GO VARIOUS
- ADDRESSING CRIME

CHEMUNG COUNTY COMPREHENSIVE PLAN



Let's put your 'Chemung County Ambassador' hats on and dive into these thought-provoking questions together:

Remember, your diverse perspectives and experiences are invaluable. Listen actively, build upon each other's ideas, and don't be afraid to think outside the box. Jot down your group's brilliant ideas, because we can't wait for you to share your insights with the larger room afterwards. Get ready to inspire us all with your passion for Chemung County!

Lynne Ruszalski
Vicki Copando
Andy Perry
Mike Perry

What do you love about Chemung County?

Outdoor Opportunities -
fishing, hunting, boating, hiking, biking
Proximity to other large urban areas
Small town feel w/ ECOMM w/ large area amenities
Historic Housing stock - Victorian, arts & crafts, etc.
Regional Airport Service
- History
- Arts + Cultural attractions, organizations, opportunities
- Community cultures

What are the challenges currently facing the County?

Declining population
Aging population
Decreasing State investment in infrastructure due to inflation.
Need to increase tax base & private investment.
Develop youth transportation system for out of school / after school programs
Develop/sustain market assets

What opportunities do you see for the County?

Redevelopment of old housing stock
Development of locally owned shops as we move away from the "mall" model.
ECO-Tourism - Kayaking, biking
CONTINUE TO DEVELOP LECOM & EC CONNECTIONS TO COMMUNITY
Redevelop Southport Prison site for something new.
Develop connective marketing of trails, arts, public art
Expand STEM ACADEMY AT CCC
- more opportunities for area HS youth!

What are your top five priorities for the County?

Attract young people
Complete ^{keep} trail system N/S & E/W: Tourism!
Increase youth mentorship through arts and cultural education and creative expression
Develop more sustainable (farm-to-table) agriculture systems. Explore education needs for residents to get & use local agriculture.
Draw/new work-from-home residents.
Attract

