

How does it work?

Your organization, along with the Chemung County DPW will choose a two-mile stretch of county roadway.

72 hours prior to conducting a clean up, you must contact CCE. No more than 24 hours after the clean up, your organization must contact CCE with the number of garbage bags to be collected for disposal.

All organizations participating in Chemung County's Adopt-A-Highway program must sign an agreement with the county and review the county's "safety tips".

The clean up must be conducted during day light hours and should be scheduled during low volume traffic periods.

Work areas are limited to the grassy area between the outer shoulder/curb and the right of way boundary. No median clean up.

Is your organization interested in the Adopt-A-Highway program?

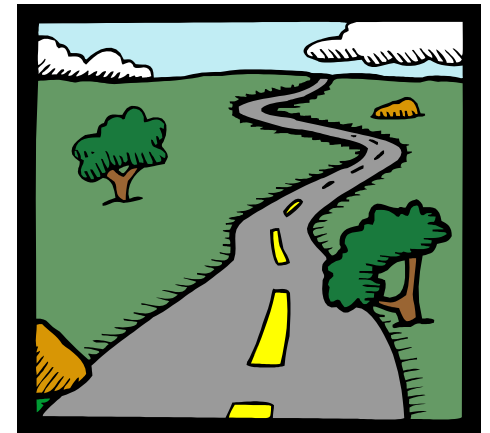
**For questions about this program or to have a representative speak to your organization contact:
Chemung County CCE at
734-4453**



Cornell University
Cooperative Extension
Chemung County

Chemung County's

Adopt-A-Highway Program



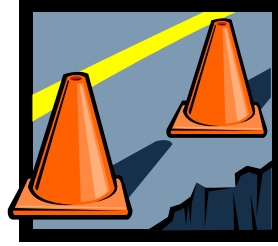
Who can adopt?

Any local business or organization may adopt a highway. Chemung County welcomes civic, fraternal, services, youth (all participants must be 10 years of age or over), senior citizen, scout, school, church, synagogue and neighborhood organizations.



How can my organization get started?

In conjunction with the Department of Public Works (DPW) your organization will choose a two mile stretch of county roadway to adopt for two or four years. Each group member will sign terms and conditions.



Why Adopt?

Chemung County can use your help keeping our local roads and highways litter free.

Getting involved in the Adopt-A-Highway program is your organization's way of showing that you believe in protecting your local environment.

It's easy! All Adopt-A-Highway program participants receive a two mile stretch of roadway that must be cleaned up bi-annually. In recognition of your participation, Chemung County will construct a sign designating your chosen clean-up location.

To ensure safety, Chemung County will also provide hard hats, safety vests, garbage bags, garbage pickup and disposal, as well as the appropriate roadway clean-up training.



If interested in Chemung County's Adopt-A-Highway program, fill out the following form, detach and put in the mail.



Name of Organization: _____

Address: _____

Phone: _____ Fax: _____

Email: _____

Number of Participants: _____

Contact Person: _____

Send to:

Cornell Cooperative Extension
Chemung Cleanup/Adopt-A-Highway
425 Pennsylvania Avenue
Elmira, New York 14904